



## F3398003 BATZ

In a one- or two-color version, this sturdy fabric has a surprising aspect that recalls a thick cotton.  
High anti-stain performance.

### F3398003 - Sable



Laize : 136,00 cm / 53,54 inch

### Pierre Frey

|                    |                          |
|--------------------|--------------------------|
| <b>TYPE</b>        | Semi plains              |
| <b>USE</b>         | Normal use               |
| <b>MARTINDALE</b>  | 40.000 T                 |
| <b>COMPOSITION</b> | 100 % Acrylic Dralon     |
| <b>SALES UNIT</b>  | Available per meter/yard |
| <b>WIDTH</b>       | 136 cm / 53,54 inch      |
| <b>WEIGHT</b>      | 802 gr / ml              |
| <b>CARE</b>        |                          |

---

|                       |                  |
|-----------------------|------------------|
| <b>CERTIFICATIONS</b> | NFPA 260-Class 1 |
|-----------------------|------------------|

---

|              |  |
|--------------|--|
| <b>NOTES</b> | High lightfastness, mold-resistant, stain & water repellent<br>Woven in Pierre Frey's workshop in northern France. Living Heritage Mill. |
|--------------|--|

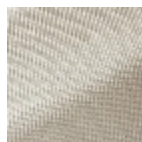
---

|                    |   |
|--------------------|---|
| <b>INFORMATION</b> | Reinforced stitching recommended to avoid fraying at seams<br>For outdoor use, make sure to use appropriate lining materials.<br>Remember to store pads and cushions in a clean, dry place when not in use. |
|--------------------|---|

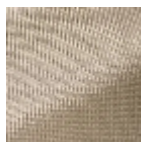
---

|             |           |
|-------------|-----------|
| <b>BOOK</b> | F99791906 |
|-------------|-----------|

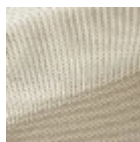
### 3 Colors



F3398001  
Écru



F3398002  
Lin



F3398003  
Sable