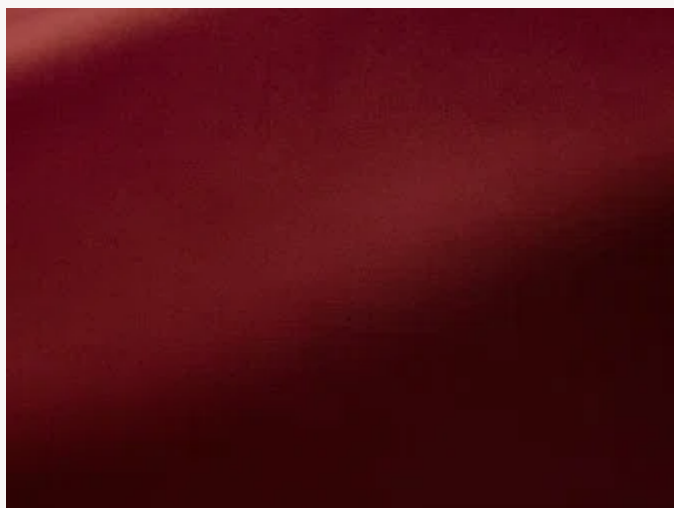




F3411009 HYERES

Performance fabric, HYERE is a very beautiful IN/OUTDOOR velvet with stain-resistant (water-repellent) & high lightfastness properties. It has nothing to envy of the cotton velvets from which it gets its look.

F3411009 - Pourpre



Laize : 141,00 cm / 55,51 inch

Pierre Frey

| | |
|--------------------|--------------------------|
| TYPE | - |
| USE | Intensive use |
| MARTINDALE | 100.000 T |
| COMPOSITION | 100 % Polyester |
| SALES UNIT | Available per meter/yard |
| WIDTH | 141 cm / 55,51 inch |
| WEIGHT | 542 gr / ml |
| CARE | |

| | |
|-----------------------|--|
| CERTIFICATIONS | EN1021-1-2 in conjunction with suitable combustion modified foam NFPA 260-Class 1 CRIB 5 in conjunction with suitable combustion modified foam CAL TB 117- Pass |
|-----------------------|--|

| | |
|--------------|---|
| NOTES | High lightfastness, mold-resistant, stain & water repellent |
|--------------|---|

| | |
|--------------------|---|
| INFORMATION | For outdoor use, make sure to use appropriate lining materials. Remember to store pads and cushions in a clean, dry place when not in use. |
|--------------------|---|

| | |
|-------------|-----------------------------|
| BOOK | F997921001MINI F99791906 |
|-------------|-----------------------------|

20 Colors



F3411001
Blanc



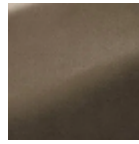
F3411002
Ecu



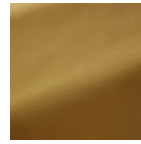
F3411003
Ficelle



F3411004
Chamois



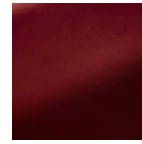
F3411006
Tapir



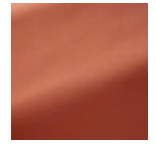
F3411007
Orpailleur



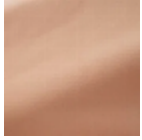
F3411008
Pralin



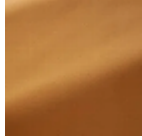
F3411009
Pourpre



F3411011
Flamingo



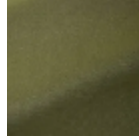
F3411012
Peche



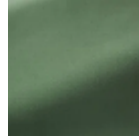
F3411013
Florida



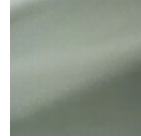
F3411014
Moutarde



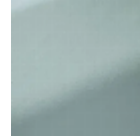
F3411016
Ortie



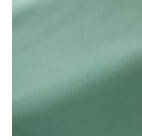
F3411017
Sauge



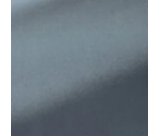
F3411018
Vert de gris



F3411019
Aqua



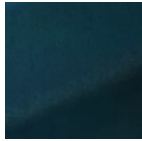
F3411020
Fidji



F3411021
Delphinium



F3411022
Canard



F3411023
Nuit