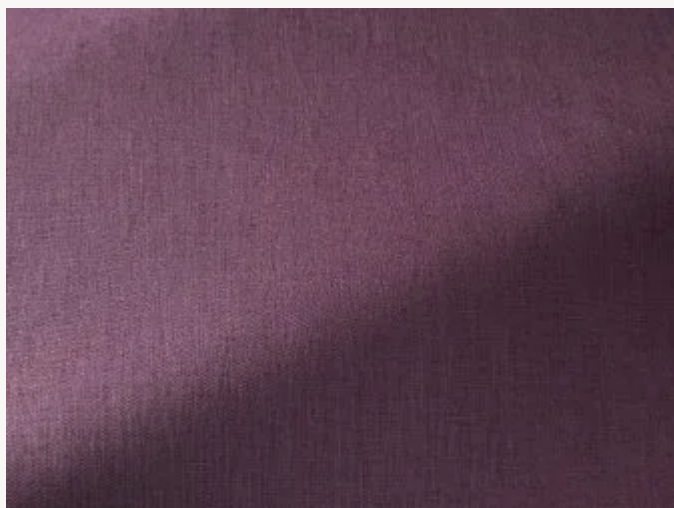




## F3444012 CABRIERES

Contemporary with its solid stonewashed coloration, this magnificent and authentic linen chintz has a traditional, subtly glazed appearance. The light fall and sherbet tints make it a sublime drapery fabric, ideal for curtains. The delicacy of its chintz finish make it sensitive to water and steam.

### F3444012 - Cochenille



← Laize : 142,00 cm / 55,90 inch →

### Pierre Frey

<b>TYPE</b>	Plains
<b>USE</b>	Curtain
<b>COMPOSITION</b>	100 % Linen
<b>SALES UNIT</b>	Available per meter/yard
<b>WIDTH</b>	142 cm / 55,90 inch
<b>WEIGHT</b>	349 gr / ml
<b>CARE</b>	
<b>NOTES</b>	Chintz finish with a glaze aspect
<b>BOOK</b>	F9979202006MINI

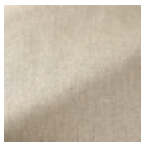
## 26 Colors



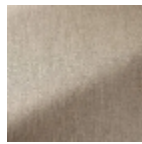
F3444001  
Blanc



F3444002  
Ivoire



F3444003  
Naturel



F3444004  
Lin



F3444005  
Ficelle



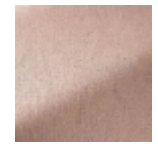
F3444006  
Galet



F3444007  
Zinc



F3444008  
Ballerine



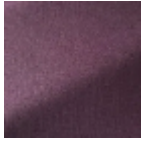
F3444009  
Poudre



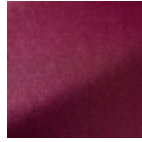
F3444010  
Peche



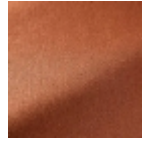
F3444011  
Vieux rose



F3444012  
Cochenille



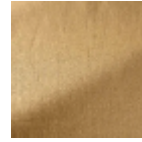
F3444013  
Rubellite



F3444014  
Sienne



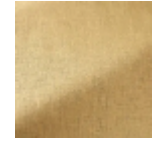
F3444015  
Cassonade



F3444016  
Saharienne



F3444017  
Ocre



F3444018  
Creme brulee



F3444019  
Celadon



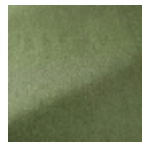
F3444020  
Aqua



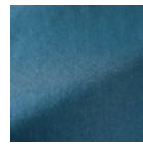
F3444021  
Verveine



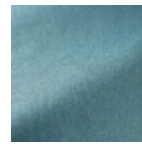
F3444022  
Argile



F3444023  
Lichen



F3444024  
Indigo



F3444025  
Orage



F3444026  
Glacier