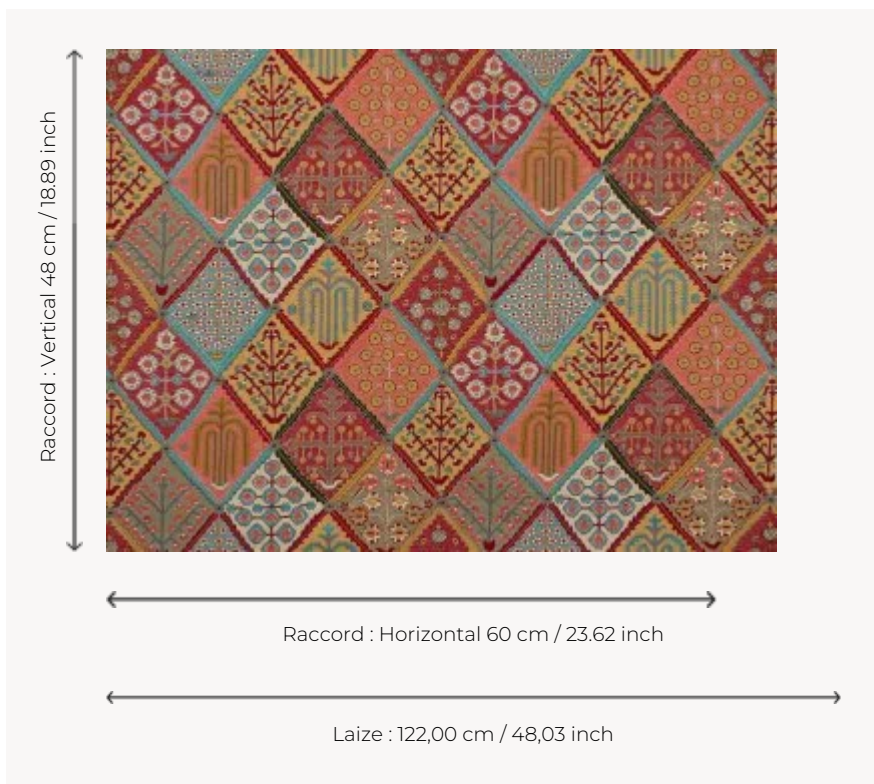



## F3460003 MALATYA

Amazing embroidery inspired by a 17th century Persian carpet motif preserved in the archives of the Maison Pierre Frey, MALATYA is available multi-colored or monochromatic. The perfect cover of its delicate cotton satin ground, dyed in harmony with the embroidery's coloring, gives it the aura of the most beautiful lampas.

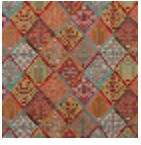
### F3460003 - Encens



### Pierre Frey

<b>TYPE</b>	Embroideries
<b>USE</b>	Curtain
<b>COMPOSITION</b>	61 % Viscose - 39 % Cotton
<b>SALES UNIT</b>	Available per meter/yard
<b>WIDTH</b>	122 cm / 48,03 inch
<b>REPEAT</b>	H: 60 cm - 23,62 inch V: 48 cm - 18,89 inch Straight repeat
<b>WEIGHT</b>	878 gr / ml
<b>CARE</b>	
<b>BOOK</b>	F9979202001

# 1 Colors



F3460003  
Encens