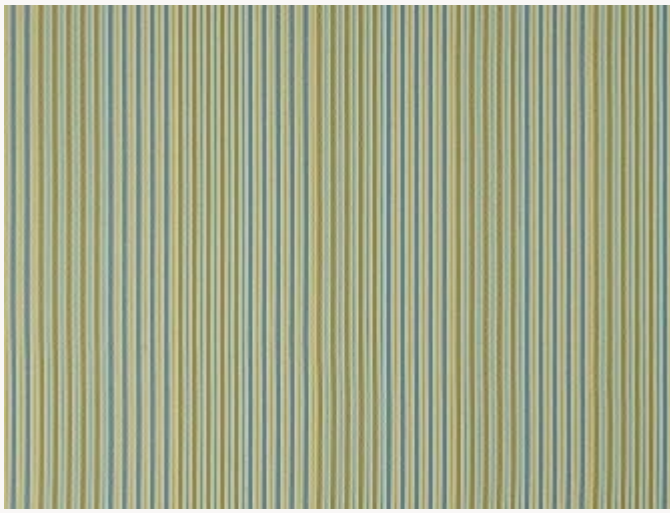




F3482002 CARMEN

This high-performance fabric is developed and woven in the Pierre Frey workshops in the north of France. It offers the best performance for in/outdoor use: stain resistance thanks to a water-repellent treatment with a textile feel and high lightfastness. Adapted from a 19th century pattern book, CARMEN recalls the rich ornaments of the Indian Empire reinterpreted today in a contemporary stripe for indoor or outdoor use.

F3482002 - Turquoise



Raccord : Horizontal 17 cm / 6.69 inch



Laize : 142,00 cm / 55,90 inch

Pierre Frey

PERFORMANCE	Outdoor
TYPE	Jacquards
COLLABORATION	Maison Caspari
USE	Normal use
MARTINDALE	20.000 T
COMPOSITION	100 % Acrylic Dralon
SALES UNIT	Available per meter/yard
WIDTH	142 cm / 55,90 inch
REPEAT	H: 17 cm - 6,69 inch Free match
WEIGHT	559 gr / ml
CARE	
CERTIFICATIONS	BS5852 Cigarette test NFPA 260-Class 1
NOTES	High lightfastness, mold-resistant, stain & water repellent Woven in Pierre Frey's workshop in northern France.Living Heritage Mill.
INFORMATION	Stripes parallel to selvages For outdoor use, make sure to use appropriate lining materials. Remember to store pads and cushions in a clean, dry place when not in use.
BOOK	F997921005MINI F997921005

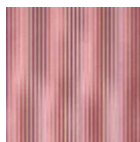
3 Colors



F3482001
Naturel



F3482002
Turquoise



F3482003
Corail