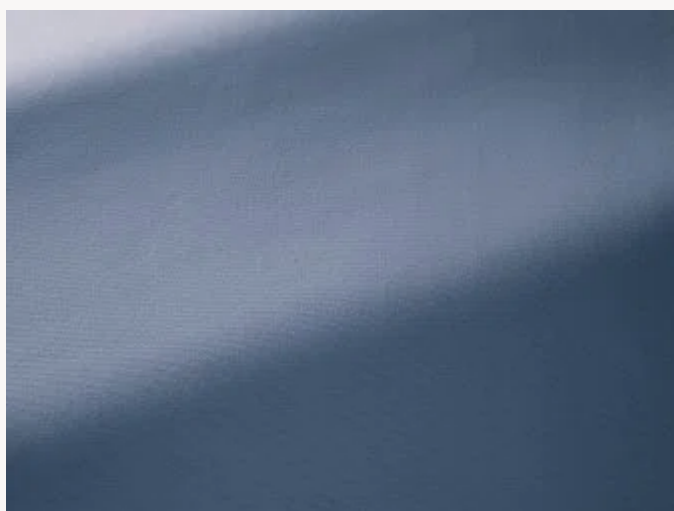




F3522030 TOILE MISTRAL

Inspired by the Mediterranean boat covers, TOILE MISTRAL is eco-friendly and part of an attentive approach to the traceability of raw materials. Blended in Spain, cotton is half organic half recycled and GOTS certified. This high performance fabric is highly resistant to abrasion. Stain-resistant its water-repellent treatment reinforces its solidity over time. Woven in France, it is available in a large range of luminous colorways.

F3522030 - Delphinium



Laize : 150,00 cm / 59,05 inch

Pierre Frey

TYPE	Plains
USE	Intensive use
MARTINDALE	60.000 T
COMPOSITION	100 % Cotton
SALES UNIT	Available per meter/yard
WIDTH	150 cm / 59,05 inch
WEIGHT	799 gr / ml
CARE	

CERTIFICATIONS	NFPA 260-Class 1
-----------------------	------------------

NOTES	Stain & water repellent
--------------	-------------------------

BOOK	F997921004MINI F997921004
-------------	------------------------------

41 Colors



F3522001
Chaux



F3522002
Ecrú



F3522003
Mastic



F3522004
Sable



F3522005
Kraft



F3522006
Lin



F3522007
Corde



F3522008
Brume



F3522009
Elephant



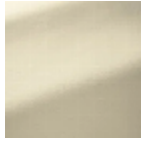
F3522010
Carbone



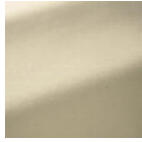
F3522011
Safran



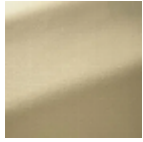
F3522012
Soleil



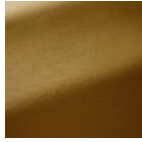
F3522013
Creme brulee



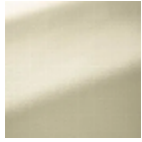
F3522014
Paille



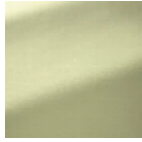
F3522015
Gazelle



F3522016
Cognac



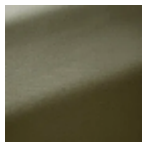
F3522017
Soja



F3522018
Tilleul



F3522019
Absinthe



F3522020
Militaire



F3522021
Pousse



F3522022
Menthol



F3522023
Turquoise



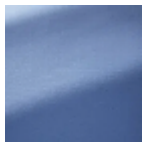
F3522024
Orage



F3522025
Opaline



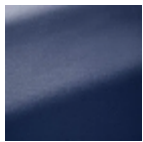
F3522026
Amande



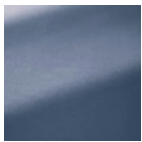
F3522027
Delft



F3522028
Horizon



F3522029
Petrole



F3522030
Delphinium



F3522031
Fontaine



F3522032
Poudre



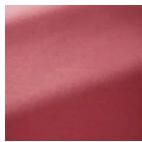
F3522033
Buvard



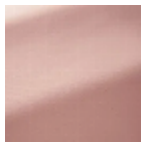
F3522035
Aubergine



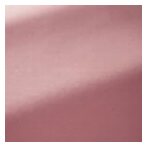
F3522036
Framboise



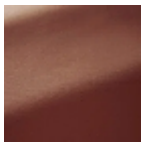
F3522037
Rhododendro
n



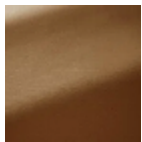
F3522038
Peche de vign



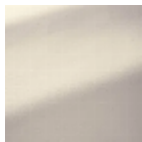
F3522039
Bonbon



F3522040
Tuile



F3522041
Cannelle



F3522042
Puces