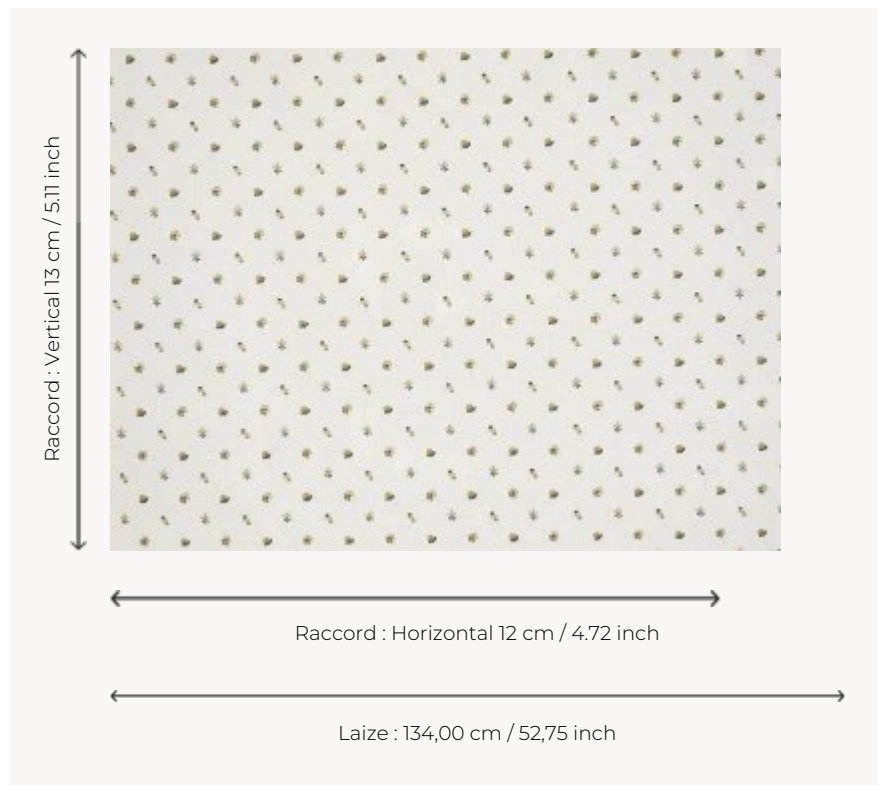


F3526001 ANTIBES

Inspired by a Provençal print uncovered in a collection of 19th century samples kept in Pierre Frey's archives, this embroidered semi-floral revisits traditional Provençal motifs in bright graphic colours.

F3526001 - Craie



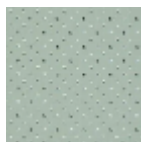
Pierre Frey

TYPE	Embroideries
USE	Curtain
COMPOSITION	65 % Cotton - 33 % Linen - 2 % Polyester
SALES UNIT	Available per meter/yard
WIDTH	134 cm / 52,75 inch
REPEAT	H: 12 cm - 4,72 inch V: 13 cm - 5,11 inch Straight repeat
WEIGHT	340 gr / ml
CARE	
BOOK	F9979212001

3 Colors



F3526001
Craie



F3526002
Bleuet



F3526003
Tournesol