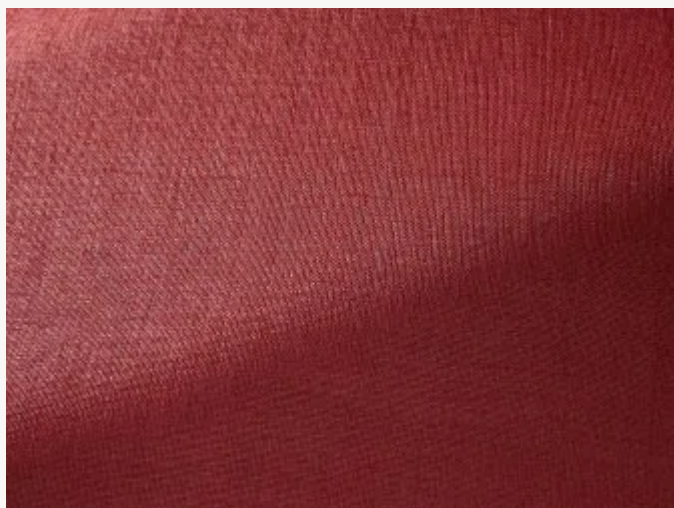




## F3533008 MARIUS

Inspired by traditional mats, this new raffia plain by its purity and its hammered luster evokes both a very great modernity and a timeless craftsmanship. Particularly adapted to seating use, its supple and dramatic drape also makes it exceptionally suited for curtains.

### F3533008 - Terre cuite



Laize : 138,00 cm / 54,33 inch

### Pierre Frey

<b>PERFORMANCE</b>	High Rub Test
<b>TYPE</b>	Plains
<b>USE</b>	Intensive use
<b>MARTINDALE</b>	100.000 T
<b>COMPOSITION</b>	57 % Polyamide - 43 % Cotton
<b>SALES UNIT</b>	Available per meter/yard
<b>WIDTH</b>	138 cm / 54,33 inch
<b>WEIGHT</b>	317 gr / ml
<b>CARE</b>	
<b>CERTIFICATIONS</b>	NFPA 260-Class 1 CAL TB 117- Pass
<b>BOOK</b>	F997921007MINI F997921004

# 11 Colors



F3533001  
Chaux



F3533002  
Osier



F3533003  
Mastic



F3533004  
Sable



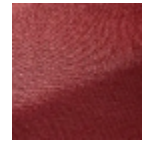
F3533005  
Savane



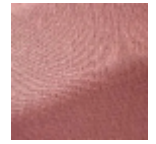
F3533006  
Tabac



F3533007  
Suie



F3533008  
Terre cuite



F3533009  
Magnolia



F3533011  
Aquatique



F3533012  
Lavande