

F3536002 POSEIDON

This drawing of mermaids illustrates the aquatic world and its divinities with a dreamlike quality. Printed on cotton, POSEIDON is a reproduction of a gouache by the textile designer Irène Rohr from 1945 and kept in the archives of Maison Pierre Frey.

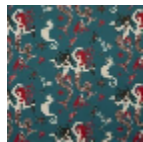
F3536002 - Menthe a l'eau



Pierre Frey

TYPE	Prints
ARTIST	Irène Rohr
USE	Curtain
COMPOSITION	100 % Cotton
SALES UNIT	Available per meter/yard
WIDTH	132 cm / 51,96 inch
REPEAT	H: 87 cm - 34,25 inch V: 54 cm - 21,25 inch Half drop repeat
WEIGHT	360 gr / ml
CARE	
BOOK	F9979212001

2 Colors



F3536001
Original



F3536002
Menthe a l'eau