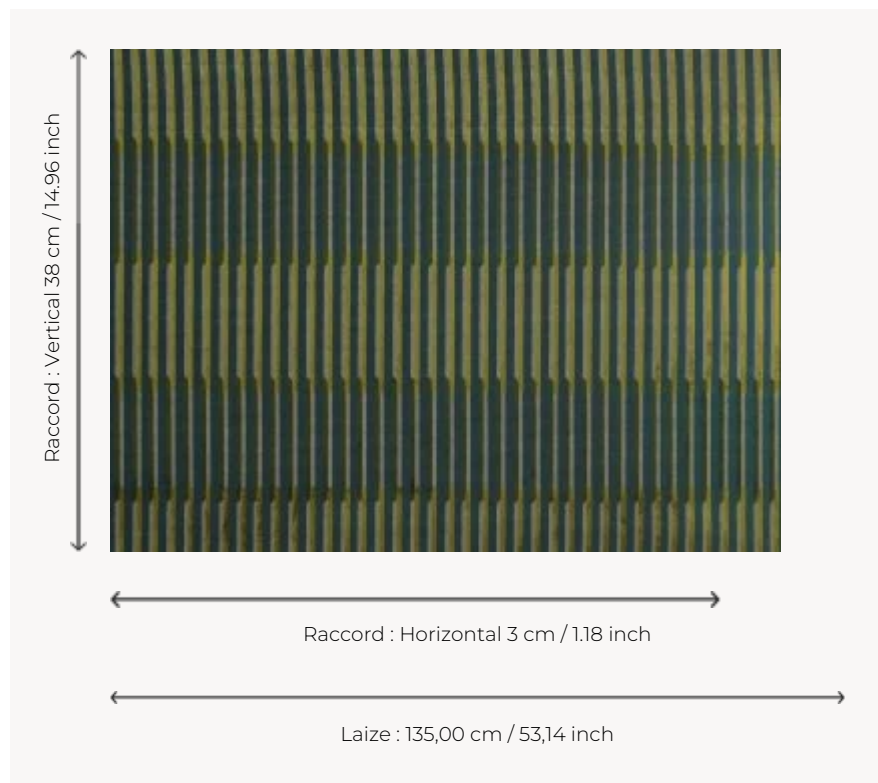



## F3551005 VELVET LINES

A recurring theme in Ken Fulk's designs, stripes, initially vertical, are here playing with the illusion of other horizontals, following the color theories of Bauhaus artist Josef Albers. This elegant chiseled velvet plays with alternating matte and shiny effects.

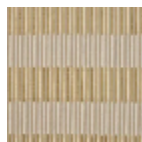
### F3551005 - Foret



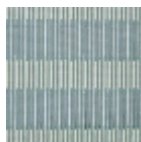
### Pierre Frey

<b>PERFORMANCE</b>	High Rub Test
<b>TYPE</b>	Epinglé velvets
<b>ARTIST</b>	Ken Fulk
<b>USE</b>	Normal use
<b>MARTINDALE</b>	35.000 T
<b>COMPOSITION</b>	74 % Viscose - 26 % Polyester
<b>SALES UNIT</b>	Available per meter/yard
<b>WIDTH</b>	135 cm / 53,14 inch
<b>REPEAT</b>	H: 3 cm - 1,18 inch V: 38 cm - 14,96 inch Straight repeat
<b>WEIGHT</b>	1309 gr / ml
<b>CARE</b>	
<b>CERTIFICATIONS</b>	NFPA 260-Class 1 CAL TB 117- Pass
<b>INFORMATION</b>	pile 100% viscose Patina with use
<b>BOOK</b>	F9979212008

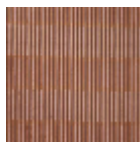
## 4 Colors



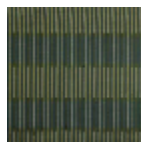
F3551002  
Or



F3551003  
Celadon



F3551004  
Tuile



F3551005  
Foret