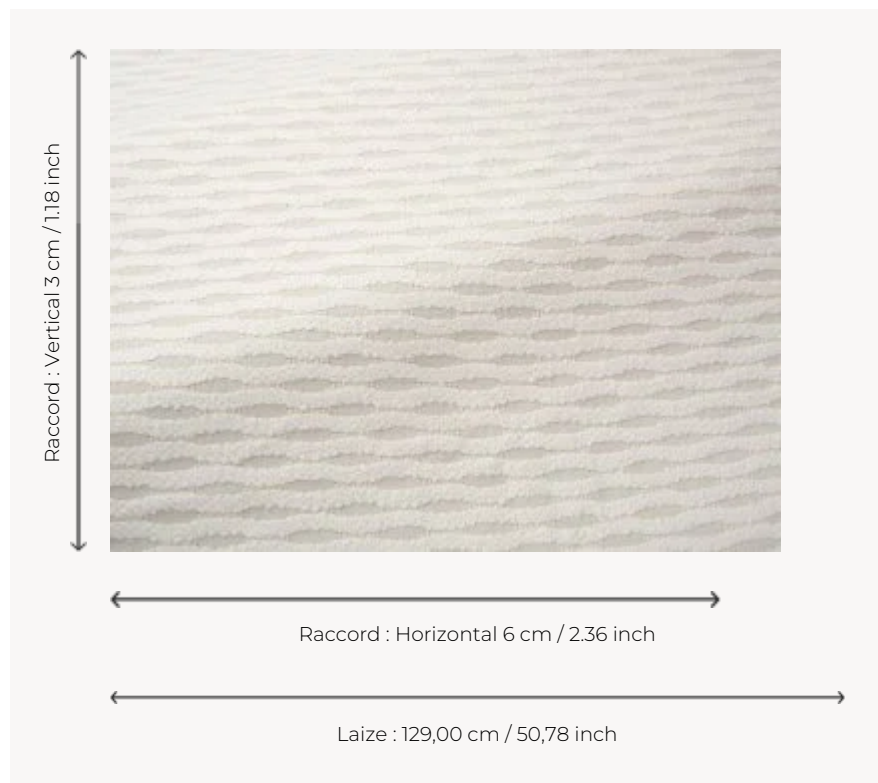



## F3633001 VICTORIA

A stunning semi-sheer, the waves of light cotton that scratch the delicate surface of VICTORIA, tilt against the light in an inverted balance. Its heavy fall and soft hand give it a unique character. Woven in France in the Pierre Frey workshops (EPV).

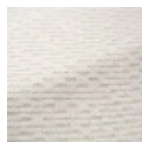
### F3633001 - Lait



### Pierre Frey

<b>TYPE</b>	-
<b>USE</b>	Curtain
<b>COMPOSITION</b>	68 % Cotton - 13 % Viscose - 12 % Wool - 5 % Polyamide - 2 % Silk
<b>SALES UNIT</b>	Available per meter/yard
<b>WIDTH</b>	129 cm / 50,78 inch
<b>REPEAT</b>	H: 6 cm - 2,36 inch V: 3 cm - 1,18 inch
<b>WEIGHT</b>	683 gr / ml
<b>CARE</b>	
<b>NOTES</b>	<p>Made in France (EPV Living Heritage Mill)</p> <p>Woven in Pierre Frey's workshop in northern France. Living Heritage Mill.</p>
<b>BOOK</b>	F9979212018

## 2 Colors



F3633001  
Lait



F3633002  
Caillou