



F3635017 CHENILLE IGOR

Magnificent cotton chenille available in a wide range of muted and contemporary tones, the IGOR CHENILLE is characterized by its modernity and its particularly thick and soft hand.

F3635017 - Tilleul



Laize : 134,00 cm / 52,75 inch

Pierre Frey

| | |
|-----------------------|---------------------------------------------------------------------------------------------------------------------------------------------------------|
| PERFORMANCE | High Rub Test |
| TYPE | - |
| USE | Normal use |
| MARTINDALE | 45.000 T |
| COMPOSITION | 84 % Cotton - 7 % Acrylic - 5 % Virgin wool - 2 % Polyamide - 2 % Alpaca |
| SALES UNIT | Available per meter/yard |
| WIDTH | 134 cm / 52,75 inch |
| WEIGHT | 984 gr / ml |
| CARE | |
| CERTIFICATIONS | BS5852 Cigarette & match test in conjunction with suitable combustion modified foam EN1021-1-2 in conjunction with suitable combustion modified foam |
| INFORMATION | Patina with use pile 100% cotton Reinforced stitching recommended to avoid fraying at seams |
| BOOK | F9979212012 |

28 Colors



F3635001
Neige



F3635002
Coton



F3635003
Nuage



F3635004
Sable



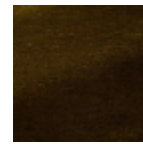
F3635005
Chamois



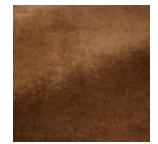
F3635006
Ourson



F3635007
Terre



F3635008
Caramel



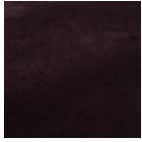
F3635009
Tangerine



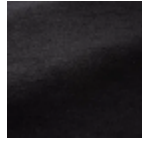
F3635010
Roux



F3635011
Clematite



F3635012
Aubergine



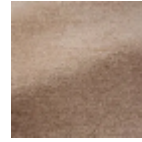
F3635013
Suie



F3635014
Ardoise



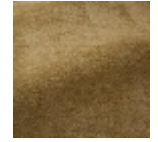
F3635015
Taupe



F3635016
Poudre



F3635017
Tilleul



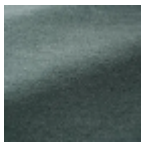
F3635018
Paille



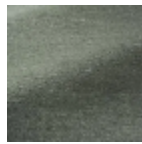
F3635019
Olive



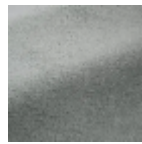
F3635020
Lichen



F3635021
Menthe



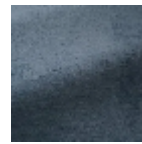
F3635022
Celadon



F3635023
Glacier



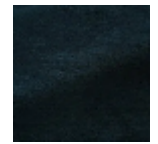
F3635024
Bleuet



F3635025
Ciel



F3635026
Orage



F3635027
Nuit



F3635028
Cerise