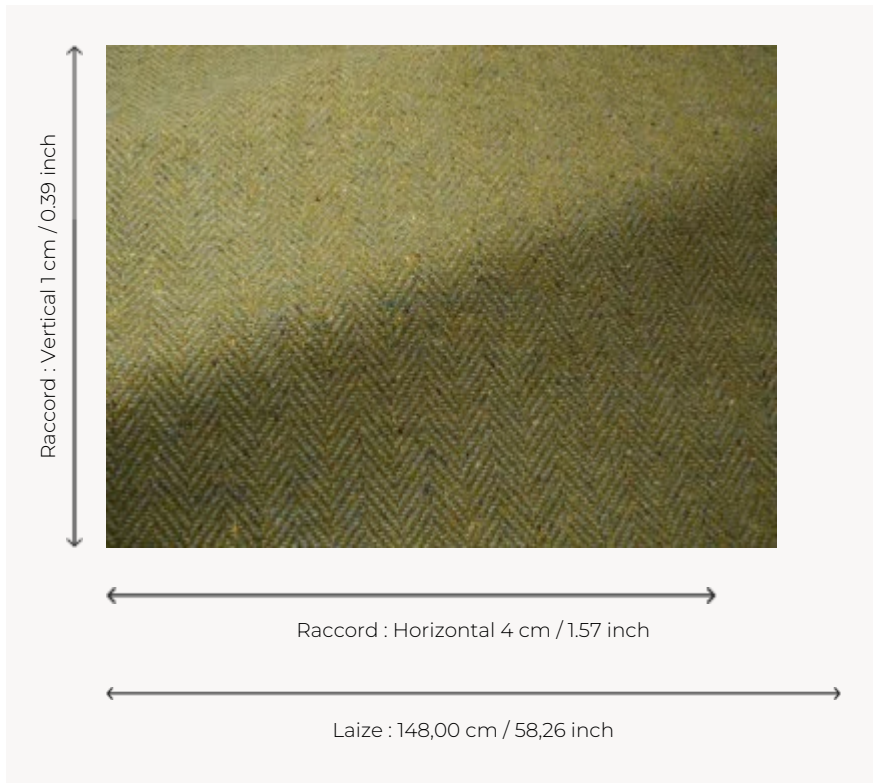


# F3640007 FINN

Authentically Irish, this pure new wool tweed is traditionnally woven in Donegal and made distinctive by its fine flecks of bright colors that punctuate its elegant herringbone weaving. If centuries have made the reputation of this heritage technique, the incredible work of yarn spinning and the exclusive color range by Sequana give it a unique character.

## F3640007 - Seagreen



## Pierre Frey

<b>PERFORMANCE</b>	High Rub Test
<b>TYPE</b>	-
<b>USE</b>	Curtain
<b>MARTINDALE</b>	35.000 T
<b>COMPOSITION</b>	100 % Virgin wool
<b>SALES UNIT</b>	Available per meter/yard
<b>WIDTH</b>	148 cm / 58,26 inch
<b>REPEAT</b>	H: 4 cm - 1,57 inch V: 1 cm - 0,39 inch
<b>WEIGHT</b>	710 gr / ml
<b>CARE</b>	
<b>CERTIFICATIONS</b>	BS5852 Cigarette & match test in conjunction with suitable combustion modified foam EN1021-1-2 in conjunction with suitable combustion modified foam NFPA 260-Class 1 CAL TB 117- Pass
<b>INFORMATION</b>	Patina with use Reinforced stitching recommended to avoid fraying at seams Irregular pattern
<b>BOOK</b>	F9979212017

# 16 Colors



F3640001  
Natural



F3640002  
Greystone



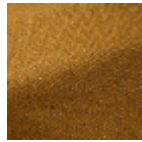
F3640003  
Aqua



F3640004  
Paldenim



F3640005  
Orange



F3640006  
Burntorange



F3640007  
Seagreen



F3640008  
Peat



F3640009  
Prune



F3640010  
Blacknatural



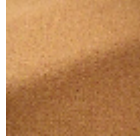
F3640101  
Indianrose



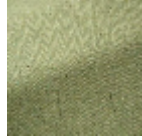
F3640102  
Verveine



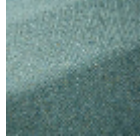
F3640103  
Pistache



F3640104  
Spice



F3640105  
Mint



F3640106  
Azur