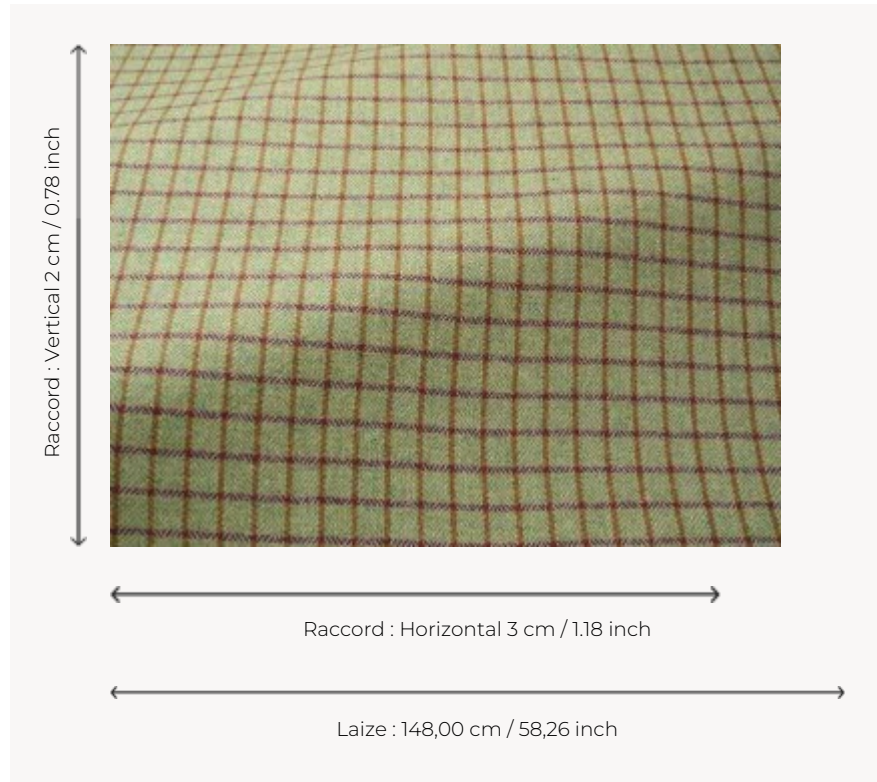


F3644004 GRETA

Traditionally woven in Donegal, Irland, this signature check is distinctive by the fineness of its elegant pure new wool herringbones. The intricate arrangement of warp and weft threads, as well as the exclusive color range by Sequana, highlight this fabric's singularity.

F3644004 - Aquagreen



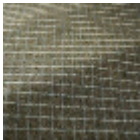
Pierre Frey

TYPE	-
USE	Curtain
MARTINDALE	16.000 T
COMPOSITION	100 % Virgin wool
SALES UNIT	Available per meter/yard
WIDTH	148 cm / 58,26 inch
REPEAT	H: 3 cm - 1,18 inch V: 2 cm - 0,78 inch
WEIGHT	350 gr / ml
CARE	
CERTIFICATIONS	EN1021-1-2 in conjunction with suitable combustion modified foam NFPA 260-Class 1 CAL TB 117- Pass
INFORMATION	Patina with use Reinforced stitching recommended to avoid fraying at seams Irregular pattern
BOOK	F9979212017

7 Colors



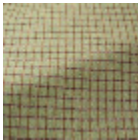
F3644001
Naturalbeige



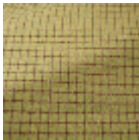
F3644002
Grey



F3644003
Turquoise



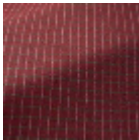
F3644004
Aquagreen



F3644005
Pistache



F3644006
Orangefushia



F3644007
Burgundy