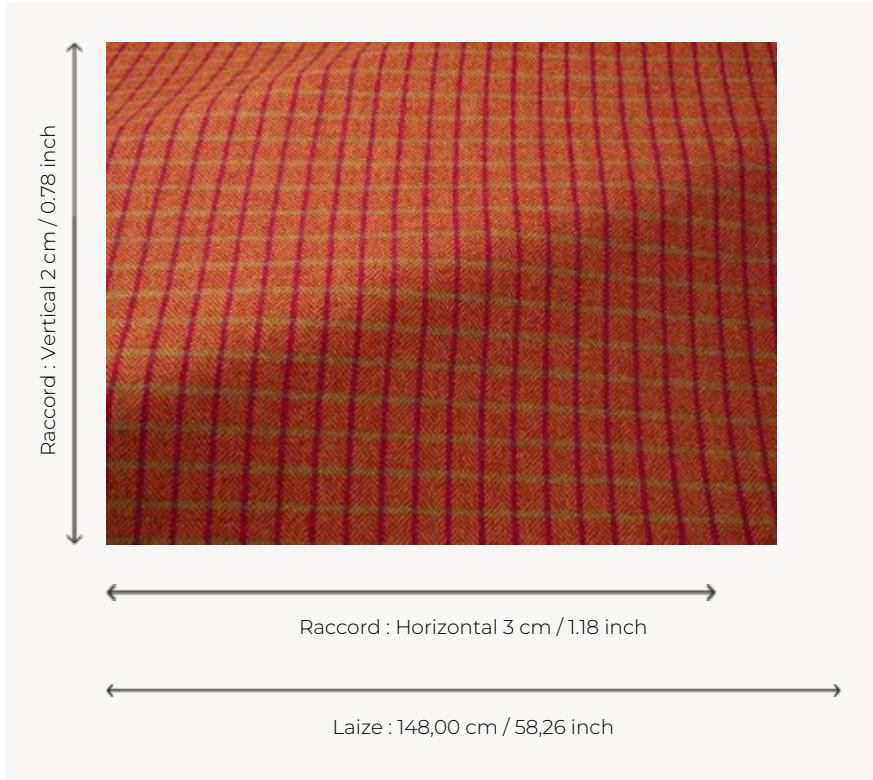




F3644006 GRETA

Traditionally woven in Donegal, Irland, this signature check is distinctive by the fineness of its elegant pure new wool herringbones. The intricate arrangement of warp and weft threads, as well as the exclusive color range by Sequana, highlight this fabric's singularity.

F3644006 - Orangefushia



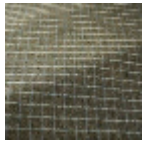
Pierre Frey

| | |
|-----------------------|--|
| TYPE | - |
| USE | Curtain |
| MARTINDALE | 16.000 T |
| COMPOSITION | 100 % Virgin wool |
| SALES UNIT | Available per meter/yard |
| WIDTH | 148 cm / 58,26 inch |
| REPEAT | H: 3 cm - 1,18 inch V: 2 cm - 0,78 inch |
| WEIGHT | 350 gr / ml |
| CARE | |
| CERTIFICATIONS | EN1021-1-2 in conjunction with suitable combustion modified foam NFPA 260-Class 1 CAL TB 117- Pass |
| INFORMATION | Patina with use Reinforced stitching recommended to avoid fraying at seams Irregular pattern |
| BOOK | F9979212017 |

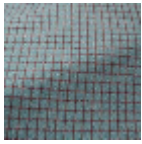
7 Colors



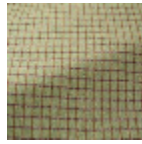
F3644001
Naturalbeige



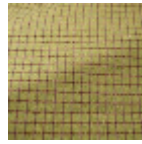
F3644002
Grey



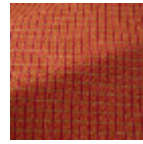
F3644003
Turquoise



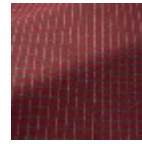
F3644004
Aquagreen



F3644005
Pistache



F3644006
Orangefushia



F3644007
Burgundy