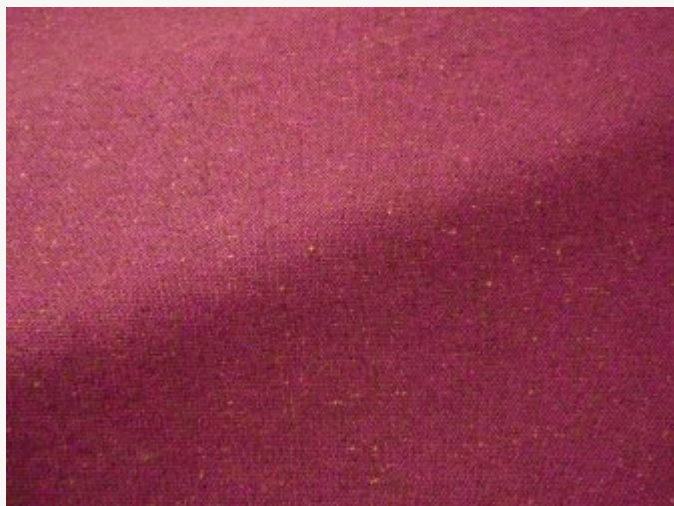




F3646007 TARA

This pure new wool semi-plain tweed is traditionally woven in Donegal and is made distinctive by the woolen flecks that punctuate its surface with fine colored contrasts. If time has made the Irish tweed famous, the incredible work of yarn spinning as the exclusive color range by Sequana make this fabric inimitable.

F3646007 - Fushia



Laize : 148,00 cm / 58,26 inch

Pierre Frey

PERFORMANCE	High Rub Test
TYPE	-
USE	Curtain
MARTINDALE	> 40.000 T
COMPOSITION	100 % Virgin wool
SALES UNIT	Available per meter/yard
WIDTH	148 cm / 58,26 inch
WEIGHT	676 gr / ml
CARE	

CERTIFICATIONS	BS5852 Cigarette & match test in conjunction with suitable combustion modified foam EN1021-1-2 in conjunction with suitable combustion modified foam NFPA 260-Class 1 CAL TB 117- Pass
-----------------------	---

INFORMATION	Patina with use Reinforced stitching recommended to avoid fraying at seams
--------------------	---

BOOK	F9979212017
-------------	-------------

10 Colors



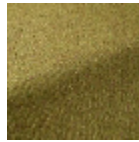
F3646001
Natural



F3646002
Pistache



F3646003
Lichen



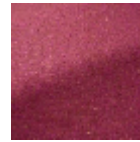
F3646004
Lime



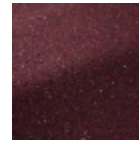
F3646005
Orange



F3646006
Rose



F3646007
Fushia



F3646008
Damson



F3646009
Freystone



F3646010
Neutral