

# F3647001 KILLIAN

Proudly Irish, this pure new wool tweed is traditionally woven in Donegal and reveals a wide tartan punctuated by fine flecks of bright colors. Resulting from an ancestral technique, this unique woolen fabric reflects an incredible work of yarn spinning, as well as an intricate arrangement of warp and weft threads and an exclusive color range by Sequana.

## F3647001 - Neutralorange



## Pierre Frey

<b>PERFORMANCE</b>	High Rub Test
<b>TYPE</b>	-
<b>USE</b>	Curtain
<b>MARTINDALE</b>	> 40.000 T
<b>COMPOSITION</b>	100 % Virgin wool
<b>SALES UNIT</b>	Available per meter/yard
<b>WIDTH</b>	148 cm / 58,26 inch
<b>REPEAT</b>	H: 13 cm - 5,11 inch V: 18 cm - 7,08 inch Straight repeat
<b>WEIGHT</b>	710 gr / ml
<b>CARE</b>	
<b>CERTIFICATIONS</b>	BS5852 Cigarette & match test in conjunction with suitable combustion modified foam EN1021-1-2 in conjunction with suitable combustion modified foam NFPA 260-Class 1 CAL TB 117- Pass
<b>INFORMATION</b>	Patina with use Reinforced stitching recommended to avoid fraying at seams
<b>BOOK</b>	F9979212017

## 7 Colors



F3647001  
Neutralorange



F3647002  
Lime



F3647003  
Rust



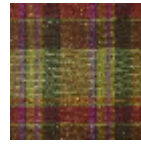
F3647101  
Lilac



F3647102  
Rose



F3647103  
Jaune



F3647104  
Emeraude