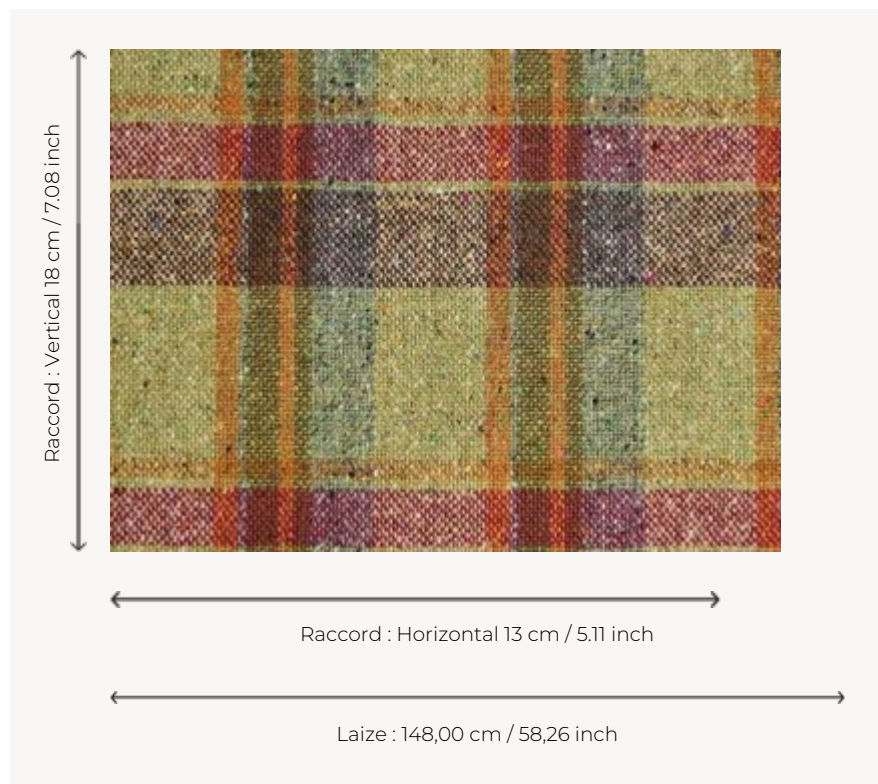


F3647002 KILLIAN

Proudly Irish, this pure new wool tweed is traditionally woven in Donegal and reveals a wide tartan punctuated by fine flecks of bright colors. Resulting from an ancestral technique, this unique woolen fabric reflects an incredible work of yarn spinning, as well as an intricate arrangement of warp and weft threads and an exclusive color range by Sequana.

F3647002 - Lime



Pierre Frey

PERFORMANCE	High Rub Test
TYPE	-
USE	Curtain
MARTINDALE	> 40.000 T
COMPOSITION	100 % Virgin wool
SALES UNIT	Available per meter/yard
WIDTH	148 cm / 58,26 inch
REPEAT	H: 13 cm - 5,11 inch V: 18 cm - 7,08 inch Straight repeat
WEIGHT	710 gr / ml
CARE	
CERTIFICATIONS	BS5852 Cigarette & match test in conjunction with suitable combustion modified foam EN1021-1-2 in conjunction with suitable combustion modified foam NFPA 260-Class 1 CAL TB 117- Pass
INFORMATION	Patina with use Reinforced stitching recommended to avoid fraying at seams
BOOK	F9979212017

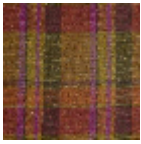
7 Colors



F3647001
Neutralorange



F3647002
Lime



F3647003
Rust



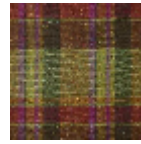
F3647101
Lilac



F3647102
Rose



F3647103
Jaune



F3647104
Emeraude