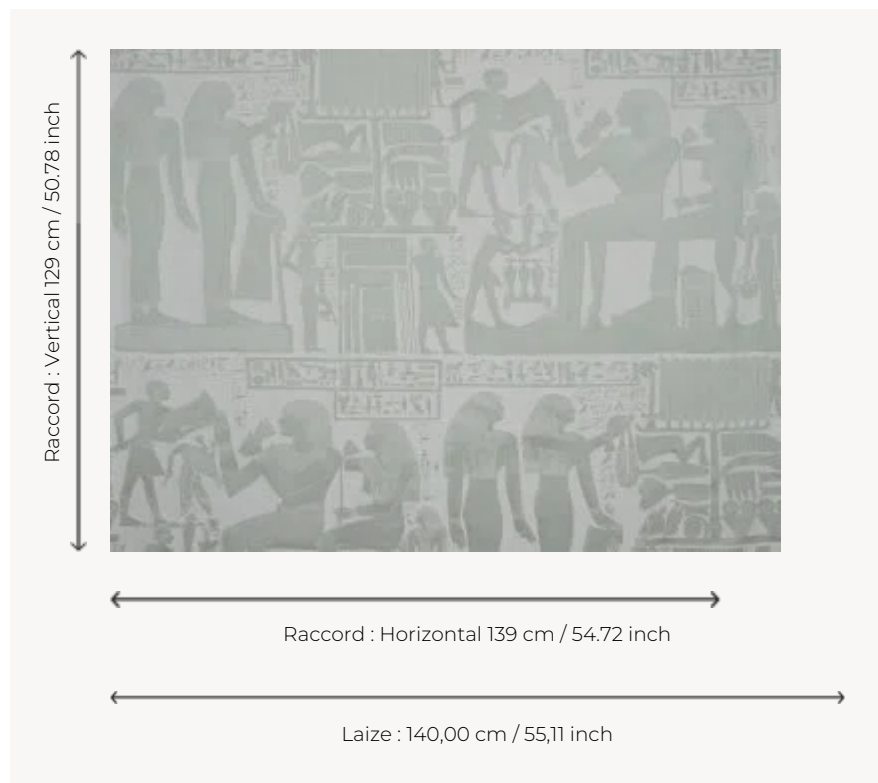


F3652002 ABKAOU

This precious damask, a bas-relief in silk and linen, depicts the cattle chief Abkaou and his wife receiving offerings. This magnificent scene of life, finely woven, restores all the emotion of the limestone stele exhibited in the Louvre's Department of Egyptian Antiquities.

F3652002 - Jade



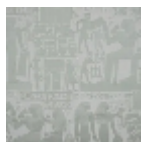
Pierre Frey

TYPE	-
COLLABORATION	Musée du Louvre
USE	Curtain
COMPOSITION	35 % Cotton - 23 % Linen - 22 % Silk - 20 % Viscose
SALES UNIT	Available per meter/yard
WIDTH	140 cm / 55,11 inch
REPEAT	H: 139 cm - 54,72 inch V: 129 cm - 50,78 inch Straight repeat
WEIGHT	350 gr / ml
CARE	
BOOK	F9979212013

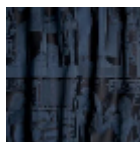
4 Colors



F3652001
Perle



F3652002
Jade



F3652003
Nuit



F3652004
Diorite