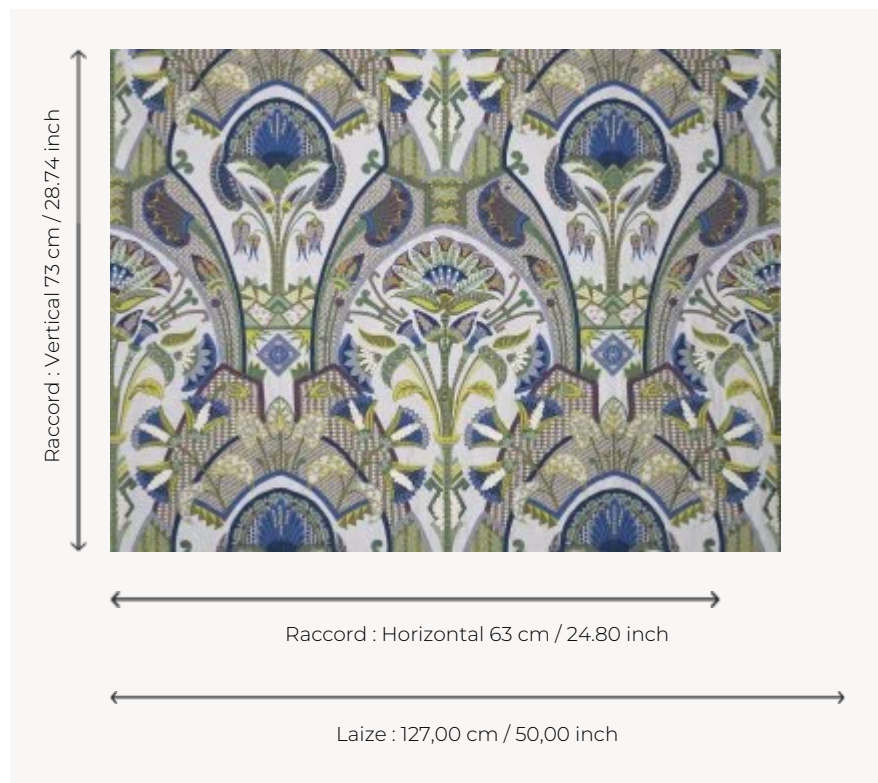


## F3656002 FLEURS D'EAU

Delicate and majestic embroidery of lotus flowers. Symbol of Egyptian art, it is considered the initial flower with magical powers. The richness of this embroidery pays tribute to the creativity and expertise of the craftsmen of ancient Egypt.

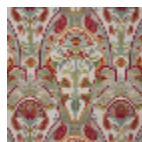
### F3656002 - Lazuli



### Pierre Frey

|                      |  |
|----------------------|--|
| <b>TYPE</b>          | Embroideries   |
| <b>COLLABORATION</b> | Musée du Louvre  |
| <b>USE</b>           | Curtain  |
| <b>COMPOSITION</b>   | 28 % Polyester - 25 % Linen - 20 % Cotton - 18 % Viscose - 9 % metallised yarn Lurex |
| <b>SALES UNIT</b>    | Available per meter/yard   |
| <b>WIDTH</b>         | 127 cm / 50,00 inch  |
| <b>REPEAT</b>        | H: 63 cm - 24,80 inch<br>V: 73 cm - 28,74 inch<br>Straight repeat                    |
| <b>WEIGHT</b>        | 755 gr / ml  |
| <b>CARE</b>          |  |
| <b>NOTES</b>         | Handcrafted embroidery   |
| <b>BOOK</b>          | F9979212013  |

## 3 Colors



F3656001  
Celadon



F3656002  
Lazuli



F3656003  
Ocre