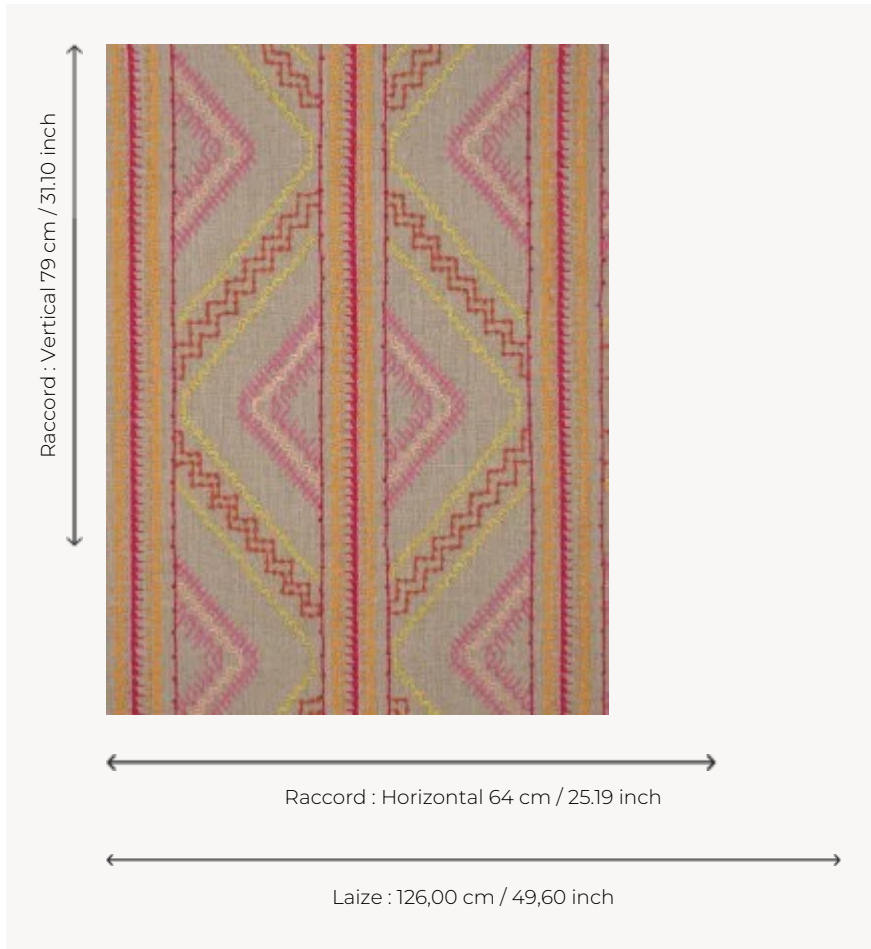


## F3687001 TRAPEZE

TRAPEZE is a large hand-embroidered stripe on linen that recalls in fresh and modern tones the traditional embroideries worn by Slavic women. It evokes the charm and persistence of folk traditions.

### F3687001 - Fruits



### Pierre Frey

<b>TYPE</b>	Embroideries
<b>USE</b>	Curtain
<b>COMPOSITION</b>	70 % Linen - 30 % Polyester
<b>SALES UNIT</b>	Available per meter/yard
<b>WIDTH</b>	126 cm / 49,60 inch
<b>REPEAT</b>	H: 64 cm - 25,19 inch V: 79 cm - 31,10 inch Straight repeat
<b>WEIGHT</b>	802 gr / ml
<b>CARE</b>	
<b>NOTES</b>	Handcrafted embroidery

## 3 Colors



F3687001  
Fruits



F3687002  
Jardin



F3687003  
Sud