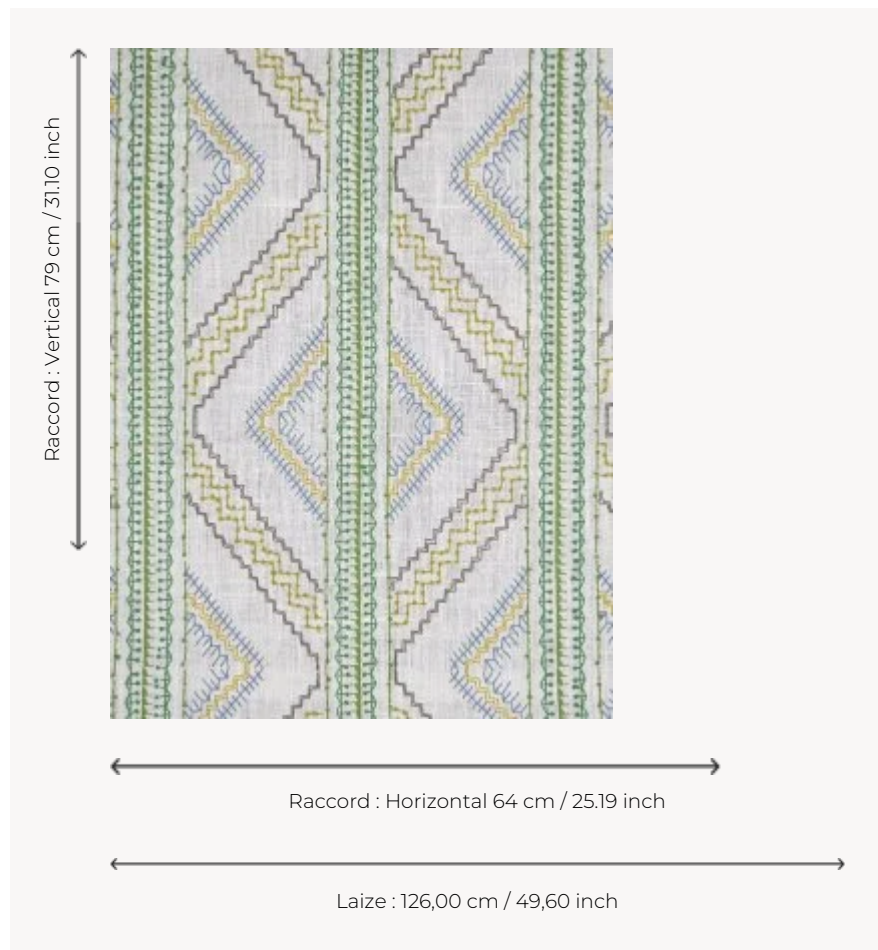


F3687002 TRAPEZE

TRAPEZE is a large hand-embroidered stripe on linen that recalls in fresh and modern tones the traditional embroideries worn by Slavic women. It evokes the charm and persistence of folk traditions.

F3687002 - Jardin



Pierre Frey

TYPE	Embroideries
USE	Curtain
COMPOSITION	70 % Linen - 30 % Polyester
SALES UNIT	Available per meter/yard
WIDTH	126 cm / 49,60 inch
REPEAT	H: 64 cm - 25,19 inch V: 79 cm - 31,10 inch Straight repeat
WEIGHT	802 gr / ml
CARE	
NOTES	Handcrafted embroidery

3 Colors



F3687001
Fruits



F3687002
Jardin



F3687003
Sud