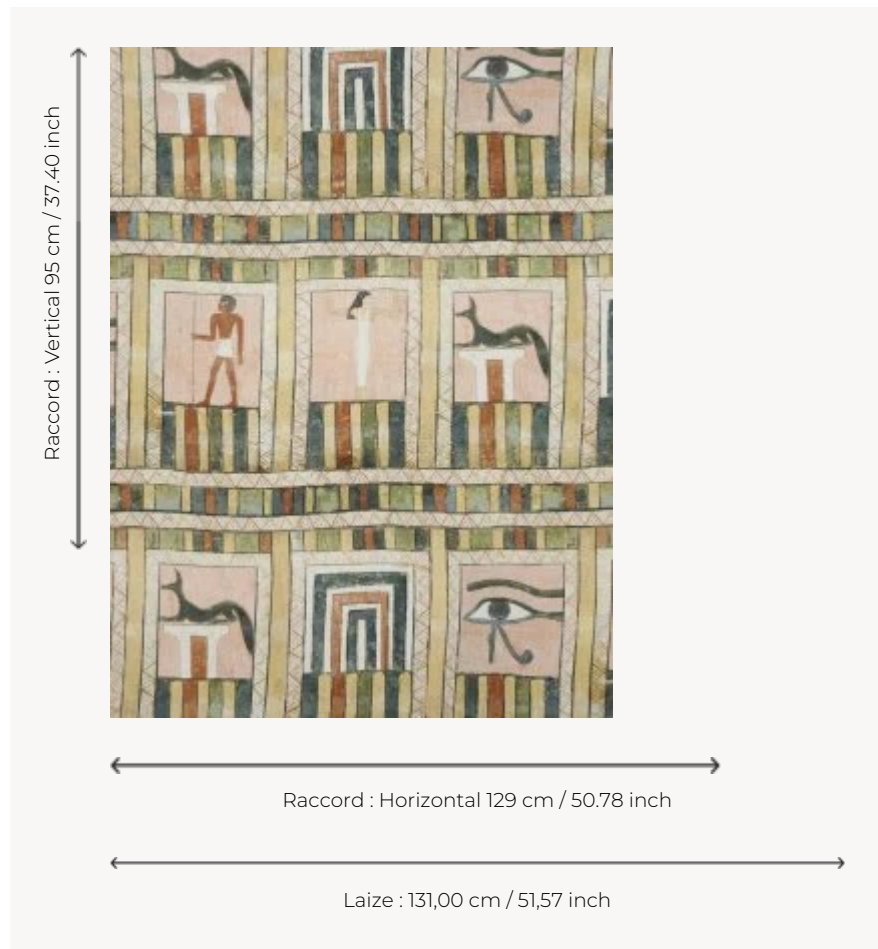


## F3698001 HATCHEPSOUT

Printed on linen, the designs on this fabric come from the coffin of a woman discovered in the cemetery of Gournet Murai and used during the reign of Hatshepsut, wife of Pharaoh Thutmose II, who herself became pharaoh upon the death of her husband in the New Kingdom. This object is on display in the Department of Egyptian Antiquities at the Louvre. The decor, arranged in several scenes, consists of a man in a loincloth, a standing woman, and a representation of Anubis and the Udjat eye, a protective symbol. Coordinated with wallpaper FP888 HATCHEPSOUT.

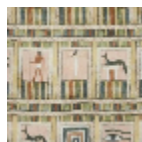
### F3698001 - Fleurdelotus



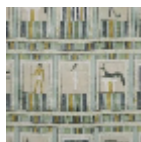
### Pierre Frey

<b>TYPE</b>	Prints
<b>COLLABORATION</b>	Musée du Louvre
<b>USE</b>	Curtain
<b>COMPOSITION</b>	100 % Linen
<b>SALES UNIT</b>	Available per meter/yard
<b>WIDTH</b>	131 cm / 51,57 inch
<b>REPEAT</b>	H: 129 cm - 50,78 inch V: 95 cm - 37,40 inch Straight repeat
<b>WEIGHT</b>	235 gr / ml
<b>CARE</b>	
<b>BOOK</b>	F9979212013

## 2 Colors



F3698001  
Fleurdelotus



F3698002  
Celadon