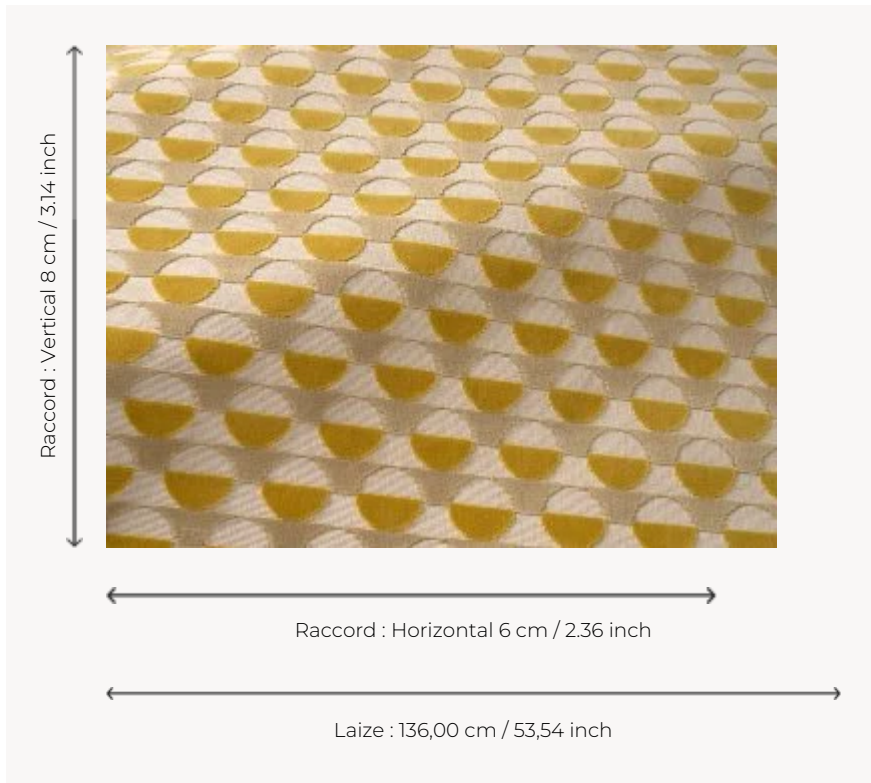



F3705003 MONTREAL

Reinterpreted in elegant cotton velvet, this timeless and modernist design by textile designer Elise Djo-Bourgeois dates from 1927. It oscillates between horizontal stripes and two-tone polka dots. Its mattness, the density of its pile and its traditional weaving on a jacquard loom with perforated cards make it a sober, singular and luxurious fabric.

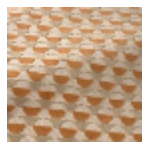
F3705003 - Savane



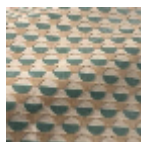
Pierre Frey

PERFORMANCE	High Rub Test
TYPE	Epinglé velvets
ARTIST	Élise Djo-Bourgeois
USE	Intensive use
MARTINDALE	>100.000 T
COMPOSITION	86 % Cotton - 14 % Polyester
SALES UNIT	Available per meter/yard
WIDTH	136 cm / 53,54 inch
REPEAT	H: 6 cm - 2,36 inch V: 8 cm - 3,14 inch Straight repeat
WEIGHT	965 gr / ml
CARE	
INFORMATION	pile 100% cotton
BOOK	F9979212023

3 Colors



F3705001
Dune



F3705002
Atoll



F3705003
Savane