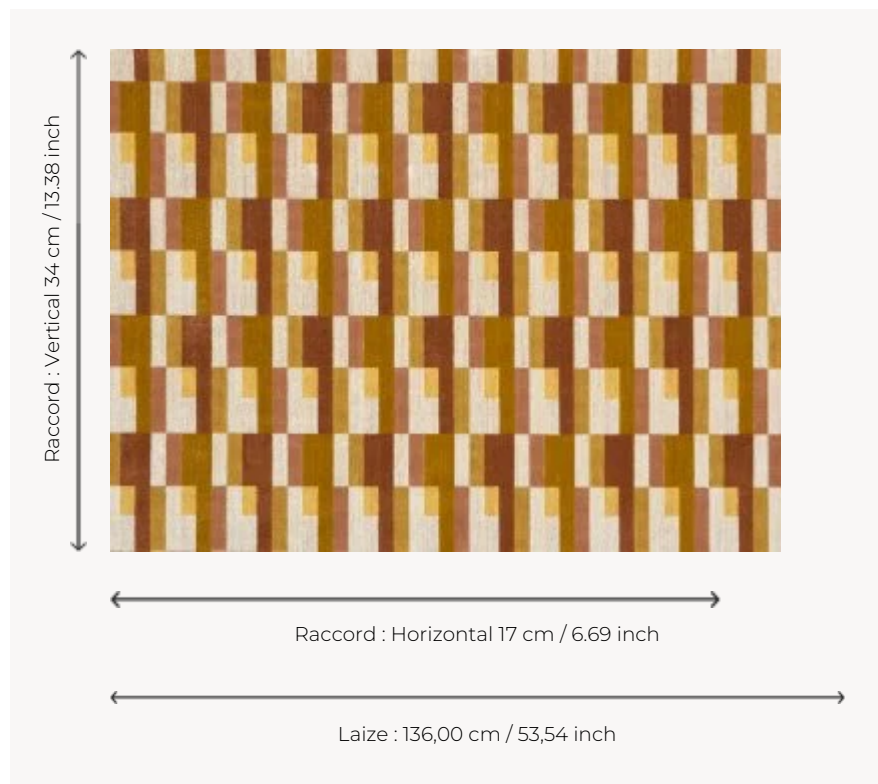


## F3706002 MONTEVIDEO

Reinterpreted in elegant cotton velvet, this timeless and modernist design was created by textile designer Elise Djo-Bourgeois circa 1927. It features geometric interweaving. The subtle sheen of the linen pile contrasting with the matte cotton loops, as well as its traditional weaving on a jacquard loom with perforated cards, make this fabric as singular as it is luxurious.

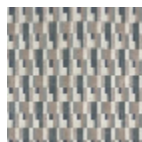
### F3706002 - Brousse



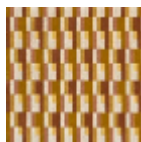
### Pierre Frey

<b>PERFORMANCE</b>	High Rub Test
<b>TYPE</b>	Epinglé velvets
<b>ARTIST</b>	Élise Djo-Bourgeois
<b>USE</b>	Moderate use
<b>MARTINDALE</b>	> 40.000 T
<b>COMPOSITION</b>	78 % Linen - 11 % Polyester - 11 % Cotton
<b>SALES UNIT</b>	Available per meter/yard
<b>WIDTH</b>	136 cm / 53,54 inch
<b>REPEAT</b>	H: 17 cm - 6,69 inch V: 34 cm - 13,38 inch Straight repeat
<b>WEIGHT</b>	1128 gr / ml
<b>CARE</b>	
<b>CERTIFICATIONS</b>	BS5852 Cigarette & match test in conjunction with suitable combustion modified foam
<b>INFORMATION</b>	pile 100% linen
<b>BOOK</b>	F9979212023

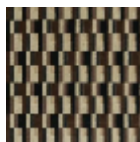
## 3 Colors



F3706001  
Archipel



F3706002  
Brousse



F3706003  
Vulcano