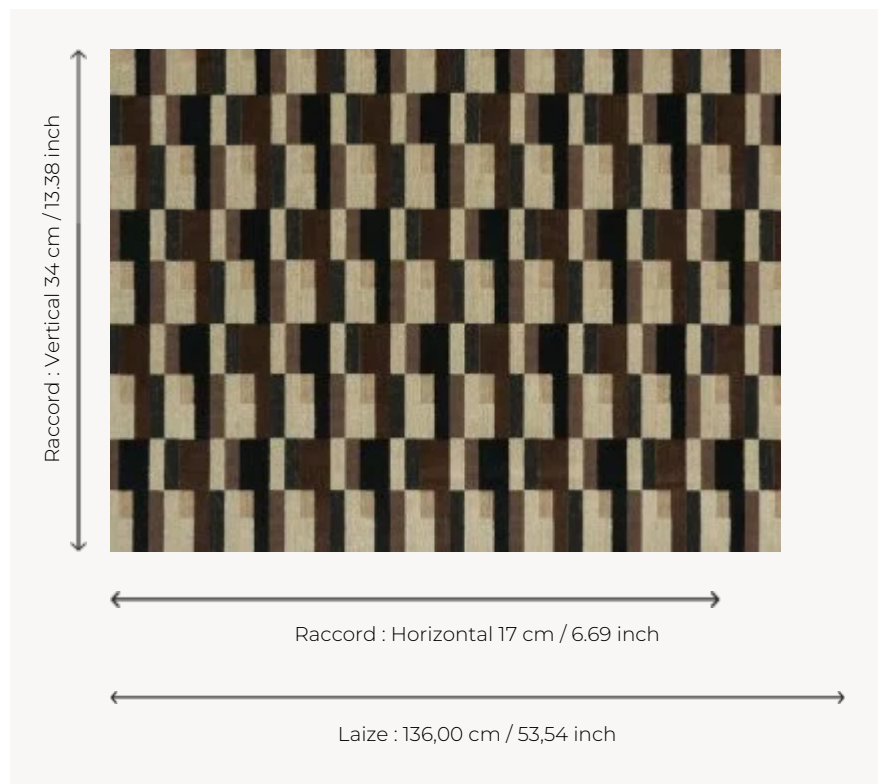


F3706003 MONTEVIDEO

Reinterpreted in elegant cotton velvet, this timeless and modernist design was created by textile designer Elise Djo-Bourgeois circa 1927. It features geometric interweaving. The subtle sheen of the linen pile contrasting with the matte cotton loops, as well as its traditional weaving on a jacquard loom with perforated cards, make this fabric as singular as it is luxurious.

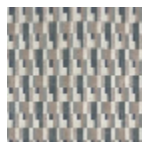
F3706003 - Vulcano



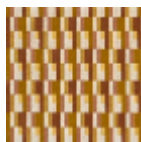
Pierre Frey

PERFORMANCE	High Rub Test
TYPE	Epinglé velvets
ARTIST	Élise Djo-Bourgeois
USE	Moderate use
MARTINDALE	> 40.000 T
COMPOSITION	78 % Linen - 11 % Polyester - 11 % Cotton
SALES UNIT	Available per meter/yard
WIDTH	136 cm / 53,54 inch
REPEAT	H: 17 cm - 6,69 inch V: 34 cm - 13,38 inch Straight repeat
WEIGHT	1128 gr / ml
CARE	
CERTIFICATIONS	BS5852 Cigarette & match test in conjunction with suitable combustion modified foam
INFORMATION	pile 100% linen
BOOK	F9979212023

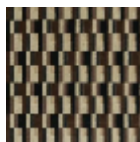
3 Colors



F3706001
Archipel



F3706002
Brousse



F3706003
Vulcano