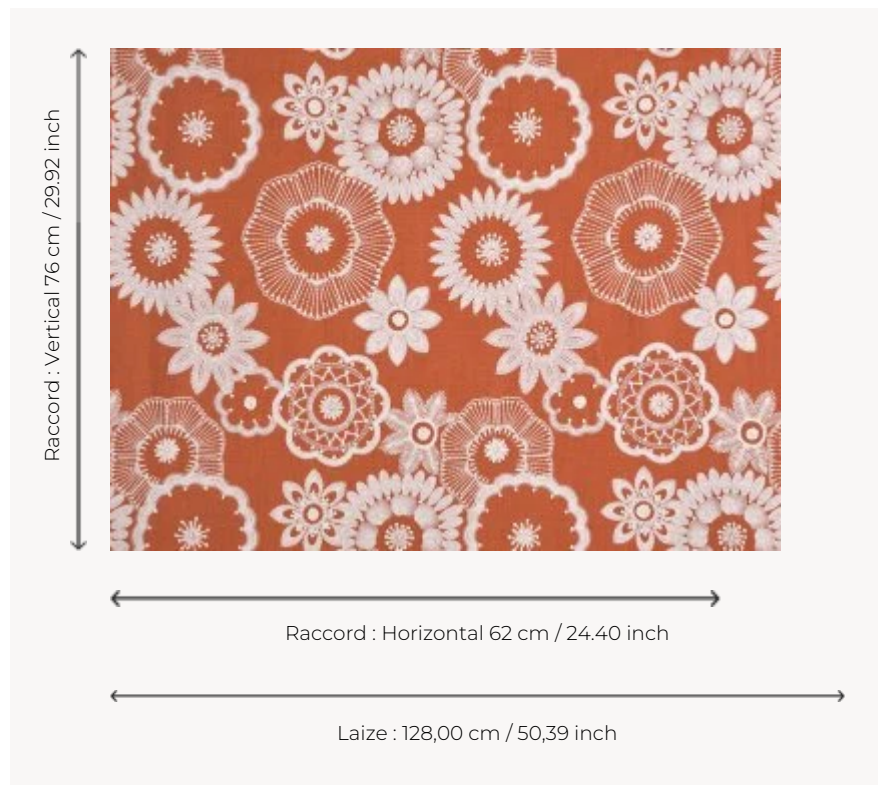


F3738003 MAHANA

Like suns, these rosettes embroidered in part by hand, swirl on a beautiful linen canvas with cheerful colors.

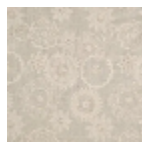
F3738003 - Grenadine



Pierre Frey

TYPE	Embroideries
COMPOSITION	64 % Linen - 19 % Polyester - 17 % Cotton
SALES UNIT	Available per meter/yard
WIDTH	128 cm / 50,39 inch
REPEAT	H: 62 cm - 24,40 inch V: 76 cm - 29,92 inch Straight repeat
WEIGHT	716 gr / ml
CARE	
NOTES	Handcrafted embroidery
INFORMATION	Cutting for approval recommended
BOOK	F9979212024

3 Colors



F3738001
Perle



F3738002
Soleil



F3738003
Grenadine