



## F3754020 CHENILLE SAINT GERMAIN

This beautiful plain and textured chenille has a particularly soft hand. It is mainly declined in soft and natural colors.

### F3754020 - Carmin



Laize : 139,00 cm / 54,72 inch

### Pierre Frey

<b>PERFORMANCE</b>	High Rub Test
<b>TYPE</b>	-
<b>USE</b>	Intensive use
<b>MARTINDALE</b>	> 50.000 T
<b>COMPOSITION</b>	53 % Polyester - 37 % Cotton - 10 % Viscose
<b>SALES UNIT</b>	Available per meter/yard
<b>WIDTH</b>	139 cm / 54,72 inch
<b>WEIGHT</b>	931 gr / ml
<b>CARE</b>	
<b>CERTIFICATIONS</b>	NFPA 260-Class 1 CAL TB 117- Pass
<b>INFORMATION</b>	Reinforced stitching recommended to avoid fraying at seams
<b>BOOK</b>	F9979212026 F9979212029MINI

## 20 Colors



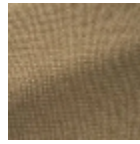
F3754001  
Neige



F3754002  
Mineral



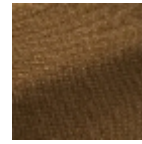
F3754003  
Sable



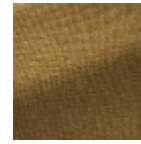
F3754004  
Ble



F3754005  
Bistre



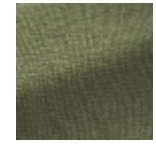
F3754006  
Mordore



F3754007  
Or



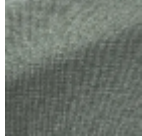
F3754008  
Muscat



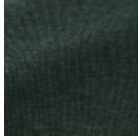
F3754009  
Mousse



F3754010  
Celadon



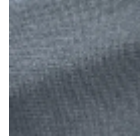
F3754011  
Tempete



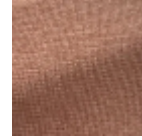
F3754012  
Malachite



F3754013  
Baltique



F3754014  
Bretagne



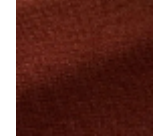
F3754015  
Celeste



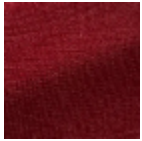
F3754016  
Tomette



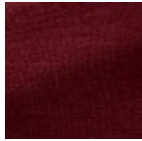
F3754017  
Grenadine



F3754018  
Brique



F3754019  
Groseille



F3754020  
Carmin