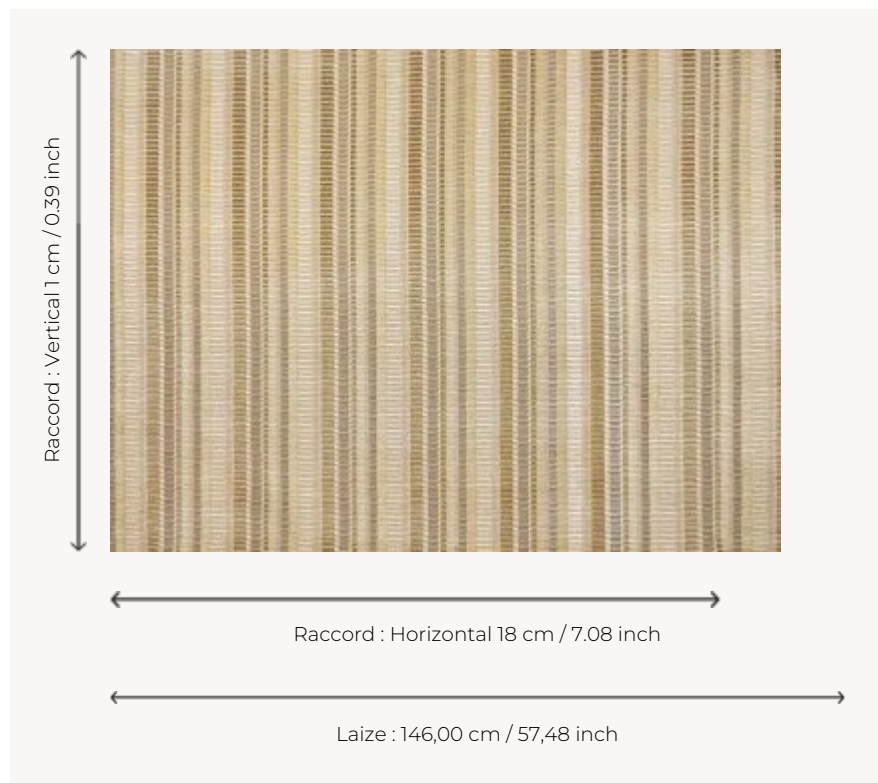


# F3760001 EFIA

Through delicate, finely mottled warped stripes , EFIA surprises with the horizontal rhythm and the mastered fantasy of its cut threads. Supple and resistant, this magnificent timeless velvet is as beautiful draped as upholstered.

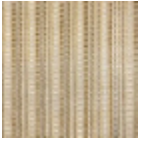
## F3760001 - Sable



## Pierre Frey

<b>PERFORMANCE</b>	High Rub Test
<b>TYPE</b>	Velvets
<b>USE</b>	Normal use
<b>MARTINDALE</b>	> 40.000 T
<b>COMPOSITION</b>	48 % Cotton - 30 % Viscose - 22 % Polyester
<b>SALES UNIT</b>	Available per meter/yard
<b>WIDTH</b>	146 cm / 57.48 inch
<b>REPEAT</b>	H: 18 cm - 7,08 inch V: 1 cm - 0,39 inch Straight repeat
<b>WEIGHT</b>	554 gr / ml
<b>CARE</b>	
<b>CERTIFICATIONS</b>	NFPA 260-Class 1 CAL TB 117- Pass
<b>INFORMATION</b>	Patina with use
<b>BOOK</b>	F9979212034

# 1 Colors



F3760001  
Sable