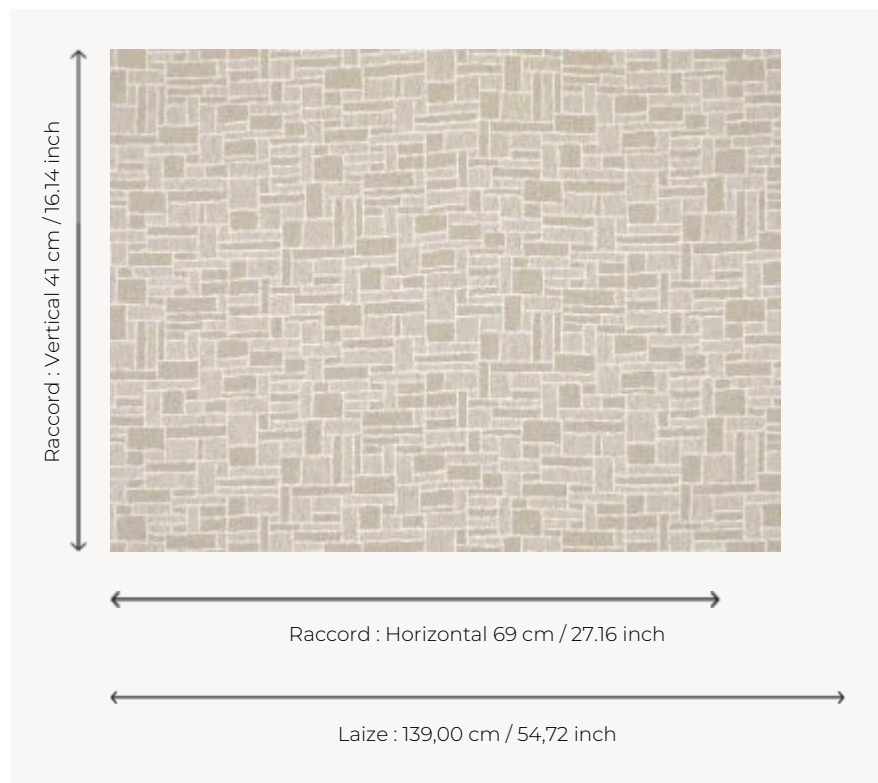


F3764002 JOON

From the Maison's archives, JOON, with its design composed of interlocking rectangles, is woven in magnificent twisted yarns. The different textures of its structure, highlighted by a woolen bouclé, display a subtle oscillation between rusticity and sophistication.

F3764002 - 002



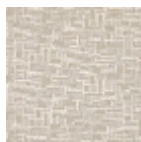
Pierre Frey

TYPE	Jacquards
USE	Normal use
MARTINDALE	25.000 T
COMPOSITION	35 % Cotton - 20 % Viscose - 18 % Polyester - 17 % Acrylic - 10 % Linen
SALES UNIT	Available per meter/yard
WIDTH	139 cm / 54,72 inch
REPEAT	H: 69 cm - 27,16 inch V: 41 cm - 16,14 inch Straight repeat
WEIGHT	952 gr / ml
CARE	
CERTIFICATIONS	NFPA 260-Class 1 CAL TB 117- Pass
BOOK	F9979212034

2 Colors



F3764001
001



F3764002
002