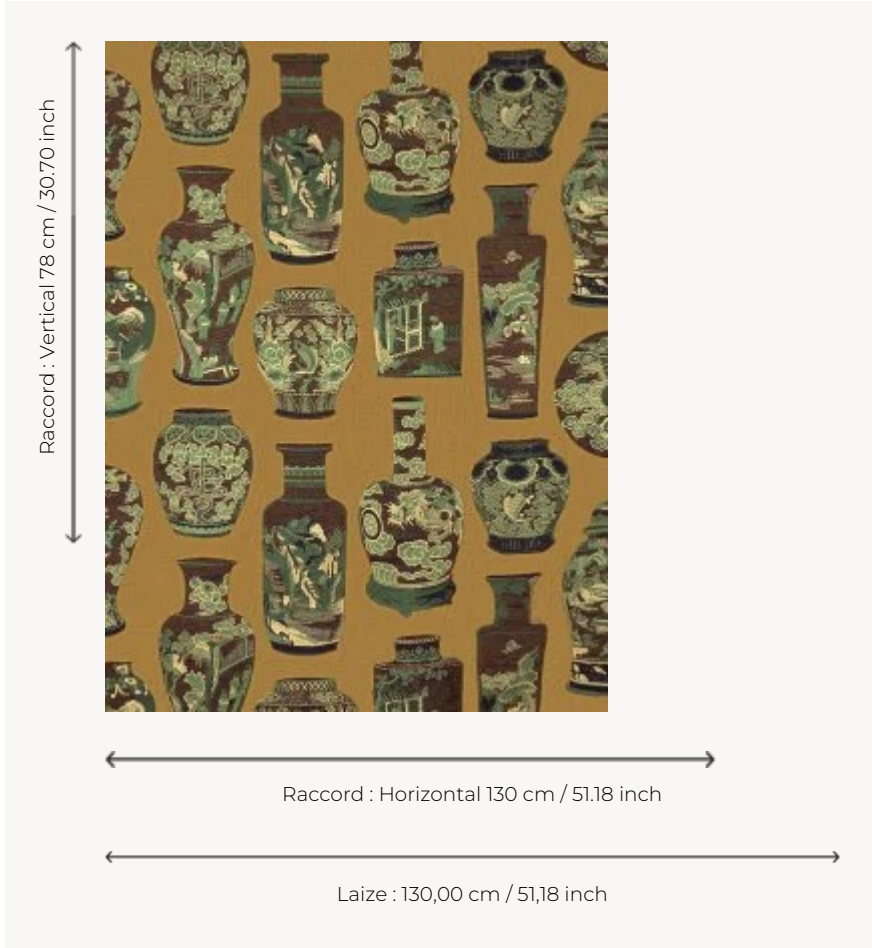


F3806002 QINGHUA

Rooted in Chinese tradition, porcelain with sumptuous cobalt-blue and white designs inspired this embroidery, depicting vases adorned with flowers and mythical animals.

F3806002 - Cedre



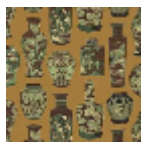
Pierre Frey

TYPE	Embroideries
COMPOSITION	45 % Linen - 30 % Viscose - 17 % Cotton - 8 % Polyester
SALES UNIT	Available per meter/yard
WIDTH	130 cm / 51,18 inch
REPEAT	H: 130 cm - 51,18 inch V: 78 cm - 30,70 inch Straight repeat
WEIGHT	598 gr / ml
CARE	
BOOK	F9979202301

2 Colors



F3806001
Blue porcelain



F3806002
Cedre