

F3820006 OTRANTE

High-performance In-Outdoor fabric, OTRANTE is a fine matte stripe on a coloured background, elegant and timeless. Available in a range of fresh, graphic shades, it is woven in Pierre Frey's EPV-certified workshops in northern France, Europe's experts in weaving lightfast, stain-resistant textiles.

F3820006 - Charbon



Raccord : Horizontal 1 cm / 0.39 inch



Laize : 143,00 cm / 56,29 inch

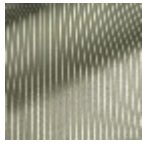
Pierre Frey

| | |
|-----------------------|--|
| PERFORMANCE | Outdoor |
| TYPE | Jacquards |
| USE | Normal use |
| MARTINDALE | < 30.000 T |
| COMPOSITION | 100 % Acrylic |
| SALES UNIT | Available per meter/yard |
| WIDTH | 143 cm / 56,29 inch |
| REPEAT | H: 1 cm - 0,39 inch |
| WEIGHT | 321 gr / ml |
| CARE |  |
| CERTIFICATIONS | NFPA 260-Class 1 CAL TB 117- Pass |
| NOTES | <p>High lightfastness, mold-resistant, stain & water repellent</p> <p>Washable fabric</p> <p>Made in France (EPV Living Heritage Mill)</p> <p>Indoor-Outdoor fabric</p> <p>Woven in Pierre Frey's workshop in northern France. Living Heritage Mill.</p> |
| INFORMATION | <p>Stripes parallel to selvages</p> <p>Reinforced stitching recommended to avoid fraying at seams</p> <p>For outdoor use, make sure to use appropriate lining materials.</p> <p>Remember to store pads and cushions in a clean, dry place when not in use.</p> |
| BOOK | F9979202305 |

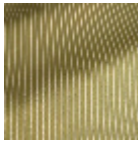
6 Colors



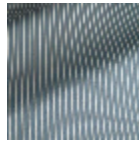
F3820001
Beige



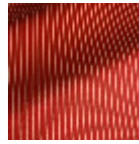
F3820002
Celadon



F3820003
Olive



F3820004
Cerule



F3820005
Carmin



F3820006
Charbon