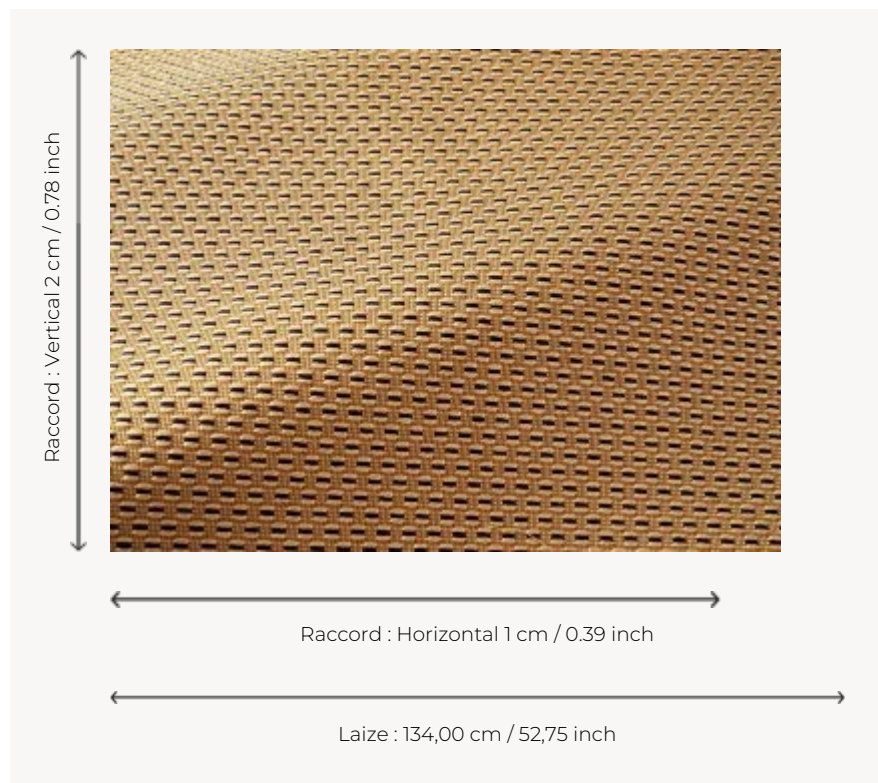




## F3822009 MARINA

High-performance In-Outdoor fabric, MARINA is a charming little graphic jacquard, reversible, with multiple thread crossings reminiscent of traditional weaving. It is woven in Pierre Frey's EPV-certified workshops in the north of France, experts in Europe in the weaving of lightfast, stain-resistant textiles.

### F3822009 - Ocre



### Pierre Frey

|                       |   |
|-----------------------|---|
| <b>PERFORMANCE</b>    | Outdoor   |
| <b>TYPE</b>           | Jacquards   |
| <b>USE</b>            | Moderate use  |
| <b>MARTINDALE</b>     | < 20.000 T  |
| <b>COMPOSITION</b>    | 100 % Acrylic   |
| <b>SALES UNIT</b>     | Available per meter/yard  |
| <b>WIDTH</b>          | 134 cm / 52,75 inch   |
| <b>REPEAT</b>         | H: 1 cm - 0,39 inch<br>V: 2 cm - 0,78 inch  |
| <b>WEIGHT</b>         | 643 gr / ml   |
| <b>CARE</b>           |   |
| <b>CERTIFICATIONS</b> | NFPA 260-Class 1<br>CAL TB 117- Pass  |
| <b>NOTES</b>          | Reversible<br>High lightfastness, mold-resistant, stain & water repellent<br>Washable fabric<br>Made in France (EPV Living Heritage Mill)<br>Indoor-Outdoor fabric<br>Woven in Pierre Frey's workshop in northern France. Living Heritage Mill. |
| <b>INFORMATION</b>    | Reinforced stitching recommended to avoid fraying at seams<br>For outdoor use, make sure to use appropriate lining materials.<br>Remember to store pads and cushions in a clean, dry place when not in use.                                     |
| <b>BOOK</b>           | F9979202305   |

## 9 Colors



F3822001  
Ble



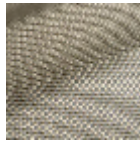
F3822002  
Soleil



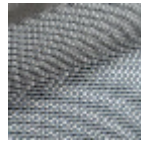
F3822003  
Dragee



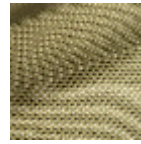
F3822004  
Fleur



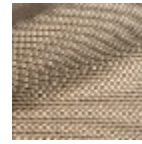
F3822005  
Orage



F3822006  
Ocean



F3822007  
Olive



F3822008  
Grege



F3822009  
Ocre