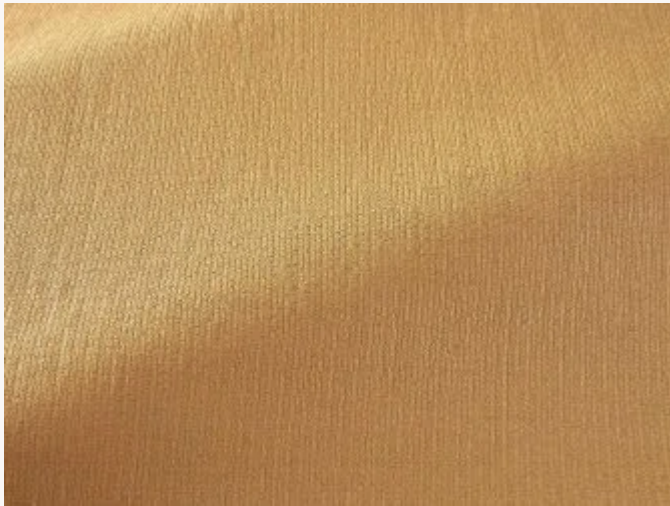




F3835002 SARGI

High-performance In-Outdoor fabric, this plain fabric matches the LECCE and SOVERATO velvets in the same "charming" spirit of traditional basketwork.

F3835002 - Sable



Laize : 132,00 cm / 51,96 inch

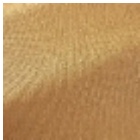
Pierre Frey

PERFORMANCE	High Rub Test
TYPE	-
MARTINDALE	35.000 T
COMPOSITION	51 % Polyethylene - 27 % Polyester - 22 % Acrylic
SALES UNIT	Available per meter/yard
WIDTH	132 cm / 51,96 inch
WEIGHT	475 gr / ml
CARE	
CERTIFICATIONS	NFPA 260-Class 1 CAL TB 117- Pass
NOTES	High lightfastness, mold-resistant, stain & water repellent Indoor-Outdoor fabric
INFORMATION	For outdoor use, make sure to use appropriate lining materials. Remember to store pads and cushions in a clean, dry place when not in use.
BOOK	F9979202305

2 Colors



F3835001
Calcaire



F3835002
Sable