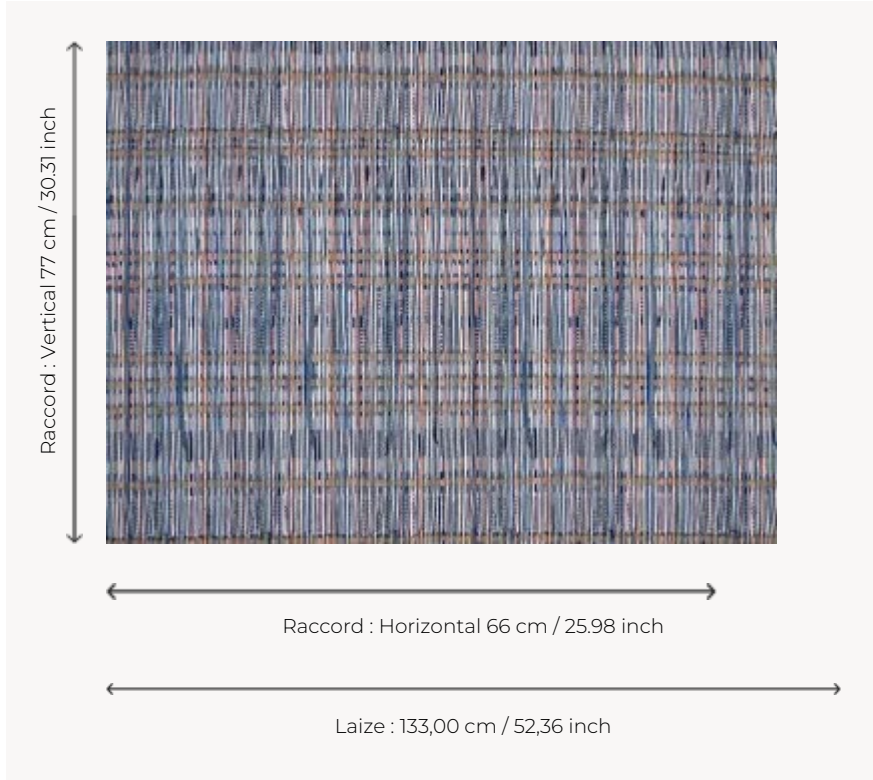


## F3842002 USHUAIA

A play of wefts and superimpositions, this linen embroidery evokes the charm and authenticity of a large multicolored tile.

### F3842002 - Maritime



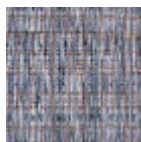
### Pierre Frey

<b>TYPE</b>	Embroideries
<b>COMPOSITION</b>	57 % Polyester - 24 % Linen - 19 % Cotton
<b>SALES UNIT</b>	Available per meter/yard
<b>WIDTH</b>	133 cm / 52,36 inch
<b>REPEAT</b>	H: 66 cm - 25,98 inch V: 77 cm - 30,31 inch Straight repeat
<b>WEIGHT</b>	698 gr / ml
<b>CARE</b>	
<b>BOOK</b>	F9979202302 F9979202304

## 2 Colors



F3842001  
Ogres



F3842002  
Maritime