



F3869002 COMPORTA

COMPORTA is a high-performance outdoor chenille with a beautiful chiné effect and comes in a wide range of natural vibrant colours. It combines strength and flexibility for seat or curtain use. Woven in the Pierre Frey (EPV) workshops in the north of France, this beautiful chenille demonstrates the Maison's expertise in weaving High Performance textiles that are stain & water repellent and light resistant.

F3869002 - Creme



Laize : 137,00 cm / 53,93 inch

Pierre Frey

TYPE	-
USE	Intensive use
MARTINDALE	60.000 T
COMPOSITION	100 % Acrylic
SALES UNIT	Available per meter/yard
WIDTH	137 cm / 53,93 inch
WEIGHT	685 gr / ml
CARE	
CERTIFICATIONS	NFPA 260-Class 1 CAL TB 117- Pass
NOTES	High lightfastness, mold-resistant, stain & water repellent Made in France (EPV Living Heritage Mill) Indoor-Outdoor fabric Woven in Pierre Frey's workshop in northern France.Living Heritage Mill.
INFORMATION	Reinforced stitching recommended to avoid fraying at seams For outdoor use, make sure to use appropriate lining materials. Remember to store pads and cushions in a clean, dry place when not in use.
BOOK	F9979202308 F9979202308MINI F9979202305

27 Colors



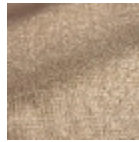
F3869001
Ivoire



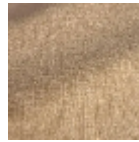
F3869002
Creme



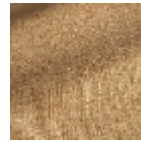
F3869003
Beige



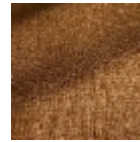
F3869004
Lin



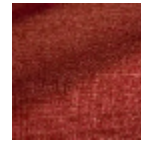
F3869005
Sable



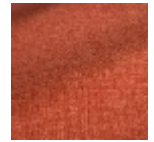
F3869006
Caramel



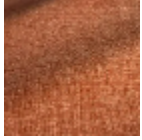
F3869007
Camel



F3869008
Bordeaux



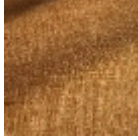
F3869009
Sanguine



F3869010
Capucine



F3869011
Bronze



F3869012
Ocre



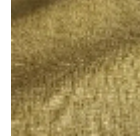
F3869013
Miel



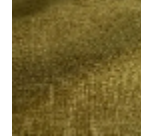
F3869014
Camomille



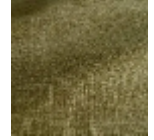
F3869015
Verveine



F3869016
Asperge



F3869017
Olive



F3869018
Cactus



F3869019
Saugé



F3869020
Amande



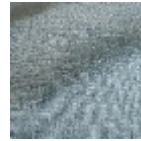
F3869021
Nuage



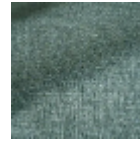
F3869022
Celeste



F3869023
Orage



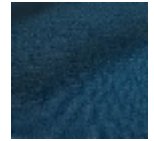
F3869024
Azur



F3869025
Neptune



F3869026
Atlantique



F3869027
Marine