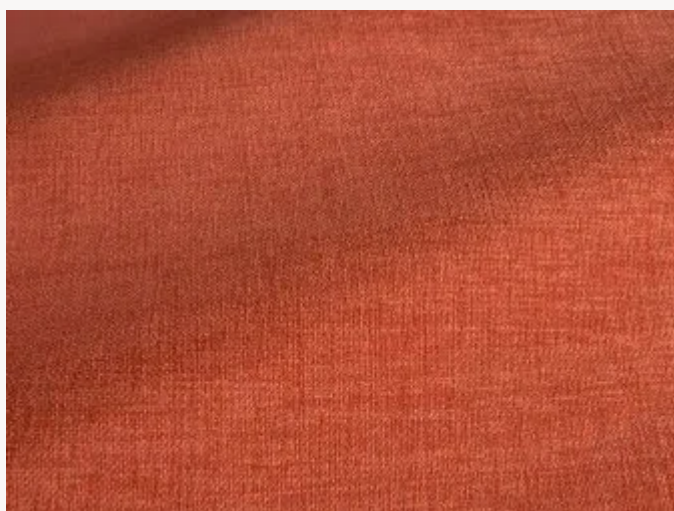




## F3869009 COMPORTA

COMPORTA is a high-performance outdoor chenille with a beautiful chiné effect and comes in a wide range of natural vibrant colours. It combines strength and flexibility for seat or curtain use. Woven in the Pierre Frey (EPV) workshops in the north of France, this beautiful chenille demonstrates the Maison's expertise in weaving High Performance textiles that are stain & water repellent and light resistant.

### F3869009 - Sanguine



Laize : 137,00 cm / 53,93 inch

### Pierre Frey

<b>TYPE</b>	-
<b>USE</b>	Intensive use
<b>MARTINDALE</b>	60.000 T
<b>COMPOSITION</b>	100 % Acrylic
<b>SALES UNIT</b>	Available per meter/yard
<b>WIDTH</b>	137 cm / 53,93 inch
<b>WEIGHT</b>	685 gr / ml
<b>CARE</b>	
<b>CERTIFICATIONS</b>	NFPA 260-Class 1 CAL TB 117- Pass
<b>NOTES</b>	High lightfastness, mold-resistant, stain & water repellent Made in France (EPV Living Heritage Mill) Indoor-Outdoor fabric Woven in Pierre Frey's workshop in northern France. Living Heritage Mill.
<b>INFORMATION</b>	Reinforced stitching recommended to avoid fraying at seams For outdoor use, make sure to use appropriate lining materials. Remember to store pads and cushions in a clean, dry place when not in use.
<b>BOOK</b>	F9979202308 F9979202308MINI F9979202305

## 27 Colors



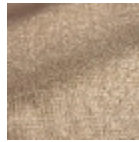
F3869001  
Ivoire



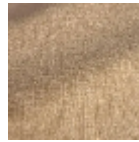
F3869002  
Creme



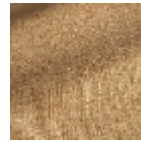
F3869003  
Beige



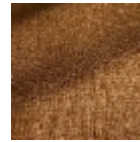
F3869004  
Lin



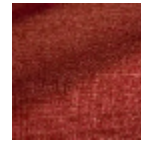
F3869005  
Sable



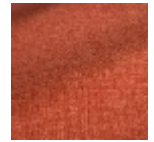
F3869006  
Caramel



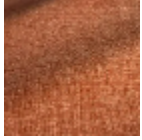
F3869007  
Camel



F3869008  
Bordeaux



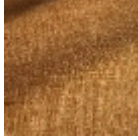
F3869009  
Sanguine



F3869010  
Capucine



F3869011  
Bronze



F3869012  
Ocre



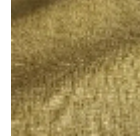
F3869013  
Miel



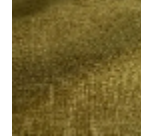
F3869014  
Camomille



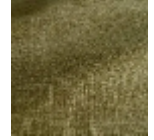
F3869015  
Verveine



F3869016  
Asperge



F3869017  
Olive



F3869018  
Cactus



F3869019  
Saugé



F3869020  
Amande



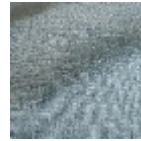
F3869021  
Nuage



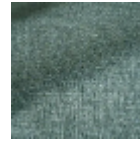
F3869022  
Celeste



F3869023  
Orage



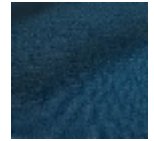
F3869024  
Azur



F3869025  
Neptune



F3869026  
Atlantique



F3869027  
Marine