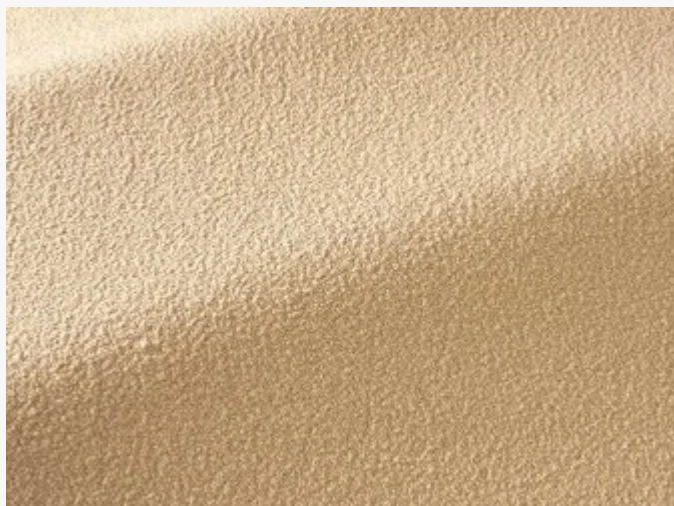




## F3927002 SEQUOIA

SEQUOIA is a pretty stretch wool crepe whose fabric plays with the irregularity of its undulations.

### F3927002 - LIN



Laize : 140,00 cm / 55,11 inch

### Pierre Frey

<b>PERFORMANCE</b>	High Rub Test
<b>TYPE</b>	-
<b>USE</b>	Intensive use
<b>MARTINDALE</b>	> 50.000 T
<b>COMPOSITION</b>	88 % Wool - 8 % Elastane - 4 % Polyamide
<b>SALES UNIT</b>	Available per meter/yard
<b>WIDTH</b>	140 cm / 55,11 inch
<b>WEIGHT</b>	1337 gr / ml
<b>CARE</b>	-
<b>CERTIFICATIONS</b>	BS5852 Cigarette & match test EN1021-1-2 in conjunction with suitable combustion modified foam NFPA 260-Class 1 CAL TB 117- Pass
<b>INFORMATION</b>	Reinforced stitching recommended to avoid fraying at seams
<b>BOOK</b>	F9979202411

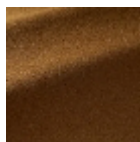
### 3 Colors



F3927001  
IVOIRE



F3927002  
LIN



F3927003  
OCRE