



F3931002 LICHEN

Beautiful stretch chenille, particularly soft and supple.

F3931002 - CHANVRE



Laize : 154,00 cm / 60,62 inch

Pierre Frey

PERFORMANCE	High Rub Test
TYPE	-
USE	Intensive use
MARTINDALE	> 50.000 T
COMPOSITION	68 % Polyester - 13 % Viscose - 11 % Cotton - 6 % Linen - 2 % Elastane
SALES UNIT	Available per meter/yard
WIDTH	154 cm / 60,62 inch
WEIGHT	1332 gr / ml
CARE	-
CERTIFICATIONS	BS5852 Cigarette & match test EN1021-1-2 in conjunction with suitable combustion modified foam NFPA 260-Class 1 CAL TB 117- Pass
INFORMATION	Reinforced stitching recommended to avoid fraying at seams
BOOK	F9979202411

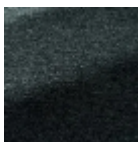
3 Colors



F3931001
COTON



F3931002
CHANVRE



F3931003
ARDOISE