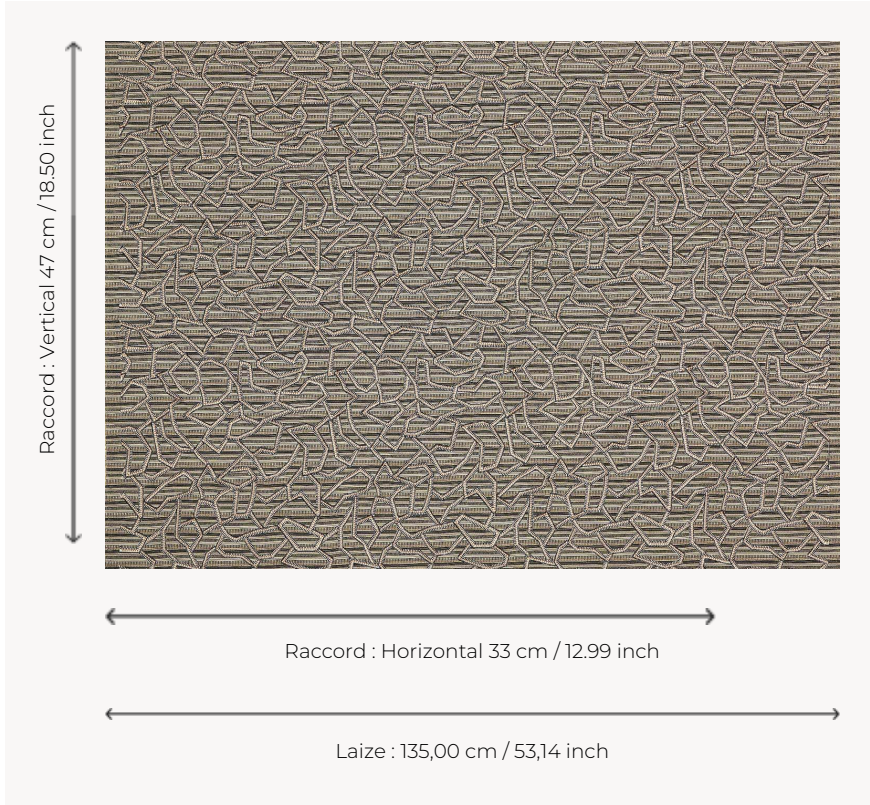


F3941001 NAZCA

Graphic embroidery on a particularly heavy and dense ribbed jacquard, NAZCA subtly evokes a world where ancient rock art influences blend with minimalist modernity.

F3941001 - GRAPHIQUE



Pierre Frey

TYPE	Embroideries
USE	Moderate use
MARTINDALE	25.000 T
COMPOSITION	51 % Polyester - 25 % Cotton - 15 % Linen - 9 % Viscose
SALES UNIT	Available per meter/yard
WIDTH	135 cm / 53,14 inch
REPEAT	H: 33 cm - 12,99 inch V: 47 cm - 18,50 inch Straight repeat
WEIGHT	742 gr / ml
CARE	-
CERTIFICATIONS	NFPA 260-Class 1 CAL TB 117- Pass
BOOK	F9979202501

1 Colors



F3941001
GRAPHIQUE