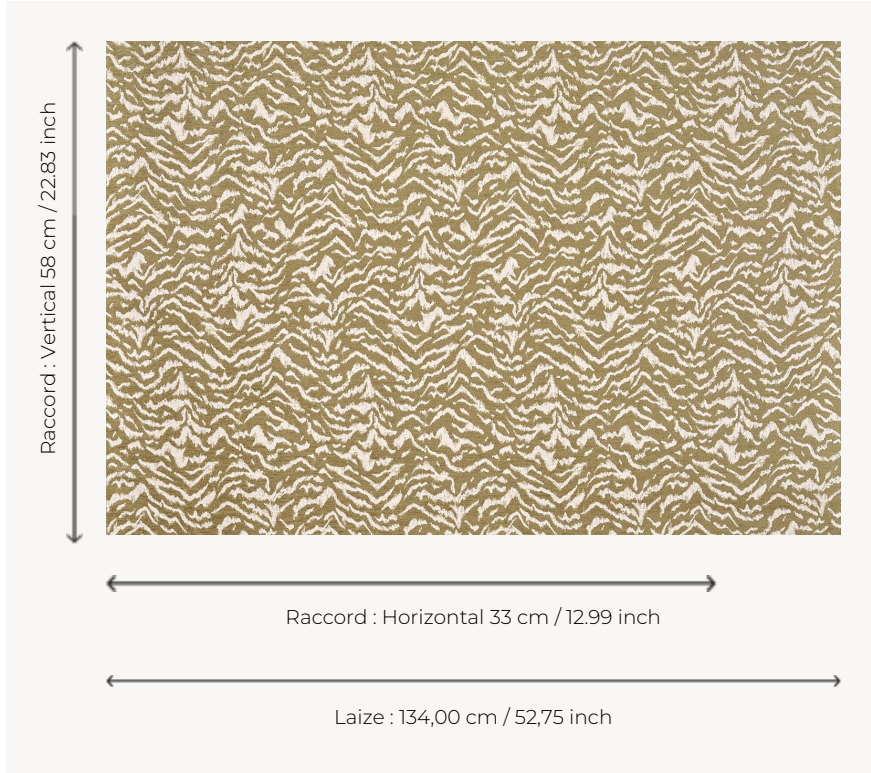


F3949002 ZÉBREAU

A soft and supple chenille jacquard, featuring an animal pattern with a measured scale, evocative of a young zebra, the foal.

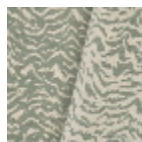
F3949002 - CHÂTAIGNE



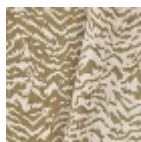
Pierre Frey

TYPE	-
USE	Moderate use
MARTINDALE	18.000 T
COMPOSITION	53 % Viscose - 25 % Polyester - 22 % Cotton
SALES UNIT	Available per meter/yard
WIDTH	134 cm / 52,75 inch
REPEAT	H: 33 cm - 12,99 inch V: 58 cm - 22,83 inch Straight repeat
WEIGHT	737 gr / ml
CARE	-
CERTIFICATIONS	NFPA 260-Class 1
NOTES	Reversible
INFORMATION	Patina with use Reinforced stitching recommended to avoid fraying at seams
BOOK	F9979202502

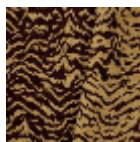
3 Colors



F3949001
AQUA



F3949002
CHÂTAIGNE



F3949003
FAUVE