

F3977002 FAUNA

Evoking a fantastic and poetic bestiary, this ciselé velvet is covered in a multitude of animals, populating the surface of the weave with their elegant and detailed forms. Available in a palette of warm colours, FAUNA offers a rich and enchanting visual spectacle.

F3977002 - SABLE



Raccord : Vertical 106 cm / 41.73 inch

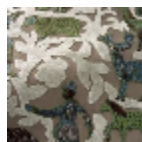
Raccord : Horizontal 68 cm / 26.77 inch

Laize : 139,00 cm / 54,72 inch

Pierre Frey

| | |
|-----------------------|--|
| TYPE | - |
| USE | Moderate use |
| MARTINDALE | > 30.000 T |
| COMPOSITION | 74 % Viscose - 16 % Polyester - 10 % Cotton |
| SALES UNIT | Available per meter/yard |
| WIDTH | 139 cm / 54,72 inch |
| REPEAT | H: 68 cm - 26,77 inch V: 106 cm - 41,73 inch Straight repeat |
| WEIGHT | 1042 gr / ml |
| CARE | - |
| CERTIFICATIONS | BS5852 Cigarette & match test |
| INFORMATION | pile 100% viscose Patina with use |

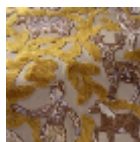
3 Colors



F3977001
JADE



F3977002
SABLE



F3977003
AMBRE