



## F3982002 CALYPSO






This magnificent high-performance In-Outdoor semi-plain, woven with yarns in contrasting colours, makes this delicate cannage vibrate. CALYPSO is produced in a high-performance Outdoor weave in Pierre Frey's EPV-certified workshops in the north of France, experts in Europe in the weaving of stain- and light-resistant textiles.

### F3982002 - FIGUE

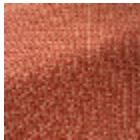


Laize : 135,00 cm / 53,14 inch

### Pierre Frey

|                |   |
|----------------|---|
| TYPE           | -   |
| USE            | Normal use  |
| MARTINDALE     | 30.000 T  |
| COMPOSITION    | 100 % Acrylic   |
| SALES UNIT     | Available per meter/yard  |
| WIDTH          | 135 cm / 53,14 inch   |
| WEIGHT         | 634 gr / ml   |
| CARE           |      |
| CERTIFICATIONS | NFPA 260-Class 1<br>CAL TB 117- Pass  |
| NOTES          | High lightfastness, mold-resistant, stain & water repellent<br>Washable fabric<br>Made in France (EPV Living Heritage Mill)<br>Indoor-Outdoor fabric<br>Woven in Pierre Frey's workshop in northern France.Living Heritage Mill.  |
| INFORMATION    | Reinforced stitching recommended to avoid fraying at seams<br>For outdoor use, make sure to use appropriate lining materials.<br>Remember to store pads and cushions in a clean, dry place when not in use.   |
| BOOK           | F9979202503   |

7 Colors



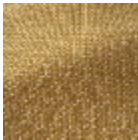
F3982001  
PAMPLEMOU  
SSE



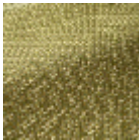
F3982002  
FIGUE



F3982003  
SABLE



F3982004  
MANGUE



F3982005  
VERDURE



F3982006  
MENTHE



F3982007  
LAGON