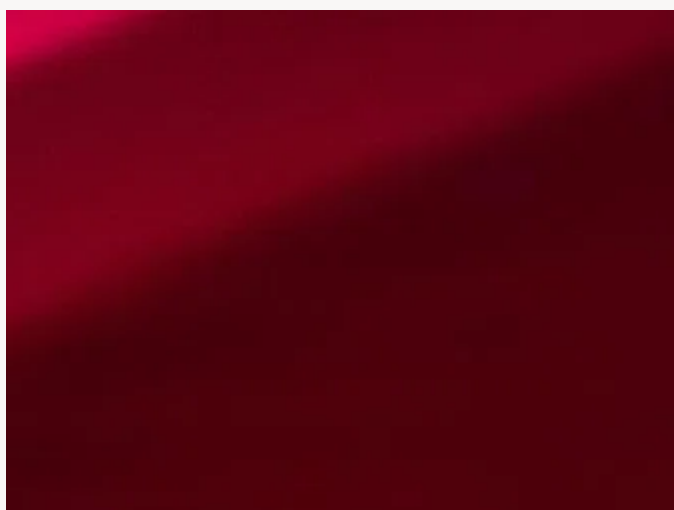




## F4019013 CHROMA

India Mahdavi has created a new velvet fabric for Pierre Frey. A material invented in Kashmir, it was originally called 'swan's down' and was first used in Iran before reaching Europe. CHROMA is a supple, compact and hard-wearing 100% cotton velvet that is extremely soft to the touch and to the eye. It comes in a unique and distinctive range of colours that complements the existing ranges. The use of nanotechnology to improve the performance of this velvet makes it the new must-have for the Maison. This stain-resistant treatment, which is PFAS-free, eco-responsible and CO classified, limits the penetration of liquids and perfectly preserves the natural look and softness of the velvet.

### F4019013 - ROYAL



Laize : 138,00 cm / 54,33 inch

### Pierre Frey

<b>TYPE</b>	-
<b>ARTIST</b>	India Mahdavi
<b>USE</b>	Intensive use
<b>MARTINDALE</b>	>100.000 T
<b>COMPOSITION</b>	100 % Cotton
<b>SALES UNIT</b>	Available per meter/yard
<b>WIDTH</b>	138 cm / 54,33 inch
<b>WEIGHT</b>	779 gr / ml
<b>CARE</b>	-
<b>CERTIFICATIONS</b>	CAL TB 117- Pass
<b>NOTES</b>	Can be embossed Stain & water repellent
<b>INFORMATION</b>	pile 100% cotton
<b>BOOK</b>	F9979202507 F9979202507MINI

# 35 Colors



F4019001  
NUAGE



F4019002  
SAND STONE



F4019003  
BUTTER



F4019004  
CLASSIC  
BEIGE



F4019005  
GYPSUM



F4019006  
AMERICANO



F4019007  
HONEY



F4019008  
NOISETTE



F4019009  
TOFFEE



F4019010  
MOWGLI



F4019011  
HEATHER



F4019012  
HENNA



F4019013  
ROYAL



F4019014  
CANDY PINK



F4019015  
BLUSH



F4019016  
AUBURN



F4019017  
PÊCHE



F4019018  
SANGUINE



F4019019  
CAPUCINE



F4019020  
SAFRAN



F4019021  
DUSKY  
LEMON



F4019022  
GREEN TEA



F4019023  
ASPARAGUS



F4019024  
ARMY



F4019025  
CACTUS



F4019026  
MING GREEN



F4019027  
LICHEN



F4019028  
MILKY MINT



F4019029  
NORTH TEA



F4019030  
NIGHT



F4019031  
DENIM



F4019032  
BABY BLUE



F4019033  
DUMBO



F4019034  
PURPLE RAIN



F4019035  
GLYCINE