



## F4019029 CHROMA

India Mahdavi has created a new velvet fabric for Pierre Frey. A material invented in Kashmir, it was originally called 'swan's down' and was first used in Iran before reaching Europe. CHROMA is a supple, compact and hard-wearing 100% cotton velvet that is extremely soft to the touch and to the eye. It comes in a unique and distinctive range of colours that complements the existing ranges. The use of nanotechnology to improve the performance of this velvet makes it the new must-have for the Maison. This stain-resistant treatment, which is PFAS-free, eco-responsible and CO classified, limits the penetration of liquids and perfectly preserves the natural look and softness of the velvet.

### F4019029 - NORTH TEA



Laize : 138,00 cm / 54,33 inch

### Pierre Frey

TYPE	-
ARTIST	India Mahdavi
USE	Intensive use
MARTINDALE	>100.000 T
COMPOSITION	100 % Cotton
SALES UNIT	Available per meter/yard
WIDTH	138 cm / 54,33 inch
WEIGHT	779 gr / ml
CARE	-
CERTIFICATIONS	CAL TB 117- Pass
NOTES	Can be embossed Stain & water repellent
INFORMATION	pile 100% cotton
BOOK	F9979202507 F9979202507MINI

# 35 Colors



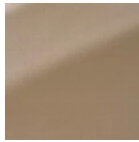
F4019001  
NUAGE



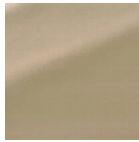
F4019002  
SAND STONE



F4019003  
BUTTER



F4019004  
CLASSIC  
BEIGE



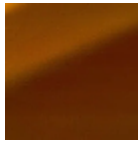
F4019005  
GYPSUM



F4019006  
AMERICANO



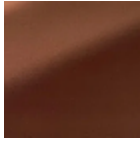
F4019007  
HONEY



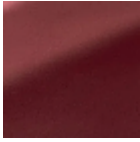
F4019008  
NOISETTE



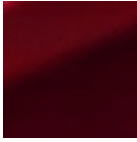
F4019009  
TOFFEE



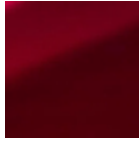
F4019010  
MOWGLI



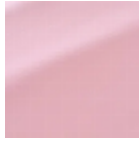
F4019011  
HEATHER



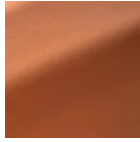
F4019012  
HENNA



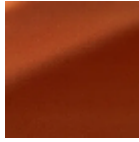
F4019013  
ROYAL



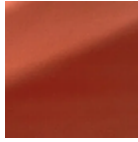
F4019014  
CANDY PINK



F4019015  
BLUSH



F4019016  
AUBURN



F4019017  
PÊCHE



F4019018  
SANGUINE



F4019019  
CAPUCINE



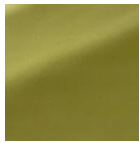
F4019020  
SAFRAN



F4019021  
DUSKY  
LEMON



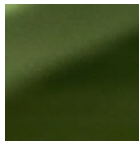
F4019022  
GREEN TEA



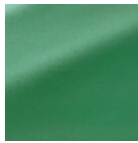
F4019023  
ASPARAGUS



F4019024  
ARMY



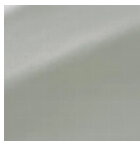
F4019025  
CACTUS



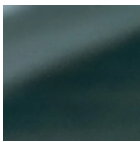
F4019026  
MING GREEN



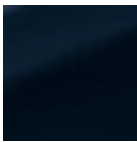
F4019027  
LICHEN



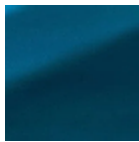
F4019028  
MILKY MINT



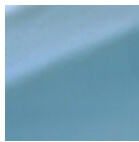
F4019029  
NORTH TEA



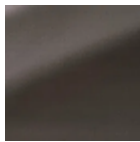
F4019030  
NIGHT



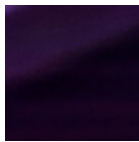
F4019031  
DENIM



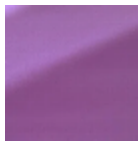
F4019032  
BABY BLUE



F4019033  
DUMBO



F4019034  
PURPLE RAIN



F4019035  
GLYCINE