

## I5004002 SFORZA

Fashioned velvet adorned with palms in mandorles characteristic of the Renaissance period.

### I5004002 - Carmine



### Fadini Borghi

<b>TYPE</b>	-
<b>USE</b>	Normal use
<b>MARTINDALE</b>	18.000 T
<b>COMPOSITION</b>	64 % Cotton - 36 % Viscose Bemberg
<b>SALES UNIT</b>	Available per meter/yard
<b>WIDTH</b>	130 cm / 51,18 inch
<b>REPEAT</b>	V: 59 cm - 23,22 inch
<b>WEIGHT</b>	500 gr / ml
<b>CARE</b>	
<b>CERTIFICATIONS</b>	EN1021-1-2 in conjunction with suitable combustion modified foam

## 4 Colors



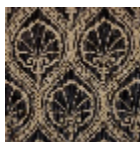
I5004001  
Visone



I5004002  
Carmine



I5004003  
Blu



I5004005  
Nero