

I5004003 SFORZA

Fashioned velvet adorned with palms in mandorles characteristic of the Renaissance period.

I5004003 - Blu



Fadini Borghi

TYPE	-
USE	Normal use
MARTINDALE	18.000 T
COMPOSITION	64 % Cotton - 36 % Viscose Bemberg
SALES UNIT	Available per meter/yard
WIDTH	130 cm / 51,18 inch
REPEAT	V: 59 cm - 23,22 inch
WEIGHT	500 gr / ml
CARE	
CERTIFICATIONS	EN1021-1-2 in conjunction with suitable combustion modified foam

4 Colors



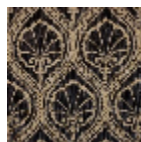
I5004001
Visone



I5004002
Carmine



I5004003
Blu



I5004005
Nero