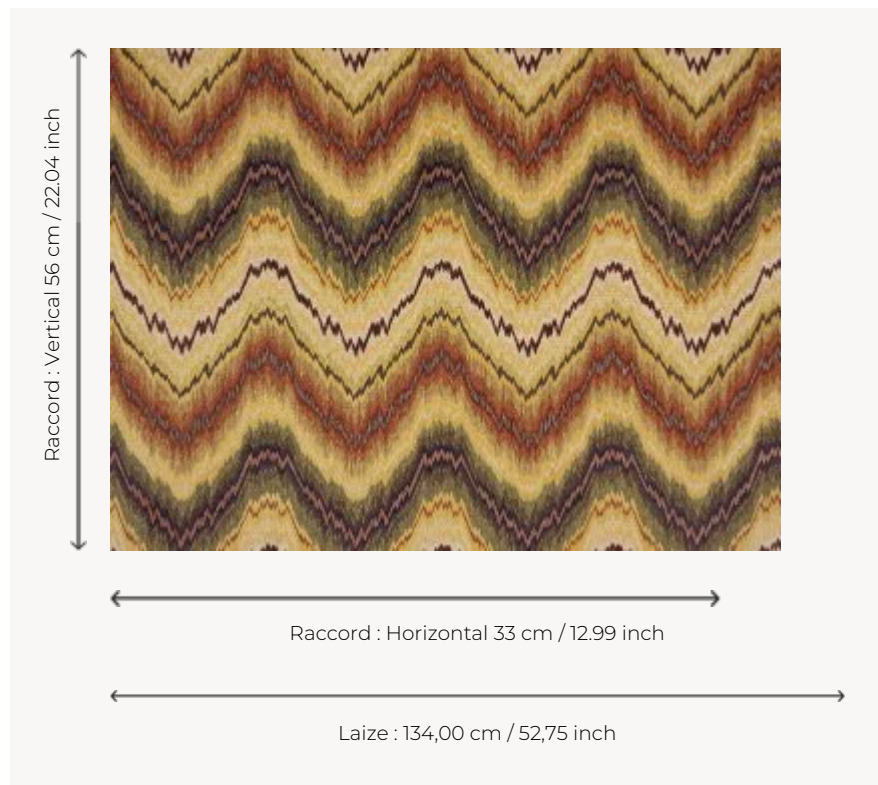


I5549004 BUDAPEST

Magnificent carved velvet with a dominant linen pattern of Hungarian stitch, characteristic of the 17th century.

I5549004 - Sottobosco



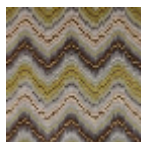
Fadini Borghi

PERFORMANCE	High Rub Test
TYPE	Epinglé velvets
USE	Intensive use
MARTINDALE	60.000 T
COMPOSITION	76 % Linen - 12 % Polyester - 12 % Cotton
SALES UNIT	Available per meter/yard
WIDTH	134 cm / 52,75 inch
REPEAT	H: 33 cm - 12,99 inch V: 56 cm - 22,04 inch Straight repeat
WEIGHT	967 gr / ml
CARE	
CERTIFICATIONS	BS5852 Cigarette & match test EN1021-1-2 in conjunction with suitable combustion modified foam NFPA 260-Class 1
INFORMATION	pile 100% linen

3 Colors



I5549001
Carmine



I5549003
Laguna



I5549004
Sottobosco