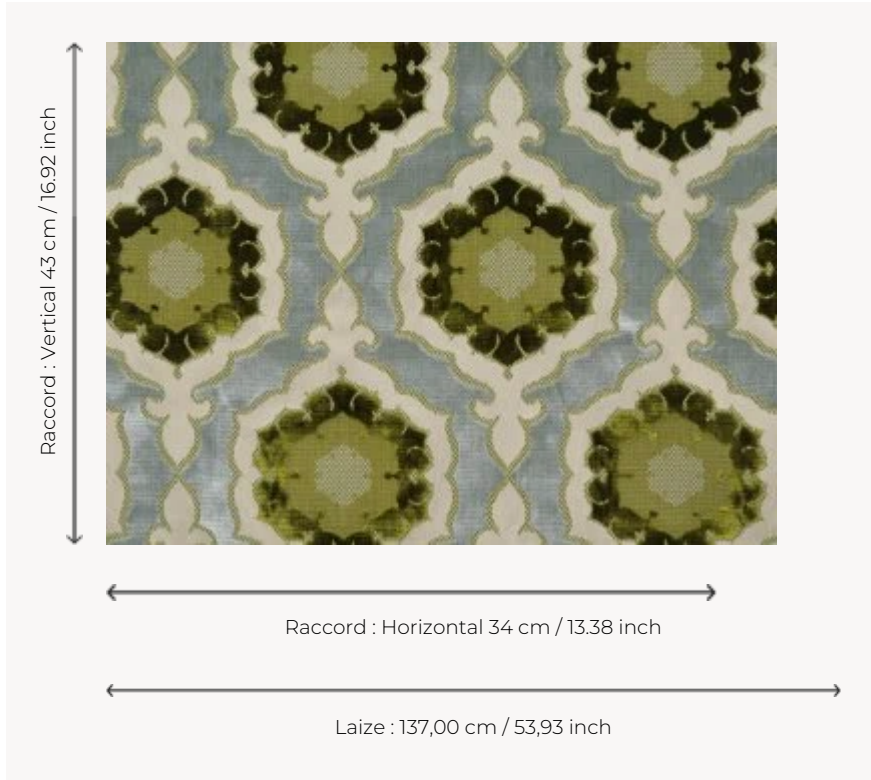


## I6509002 BARTHOLOMEO

Sumptuous velvet that evokes the elegance of the interiors of the 16th century. This Genoa velvet, stands out on a cotton satin background. The relief design creates a highly-decorative medallion in velvet.

### I6509002 - Printemps



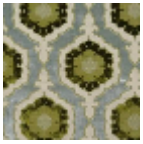
### Fadini Borghi

<b>TYPE</b>	-
<b>USE</b>	Moderate use
<b>MARTINDALE</b>	10.000 T
<b>COMPOSITION</b>	55 % Viscose - 45 % Cotton
<b>SALES UNIT</b>	Available per meter/yard
<b>WIDTH</b>	137 cm / 53,93 inch
<b>REPEAT</b>	H: 34 cm - 13,38 inch V: 43 cm - 16,92 inch
<b>WEIGHT</b>	742 gr / ml
<b>CARE</b>	

## 2 Colors



I6509001  
Carmin



I6509002  
Printemps