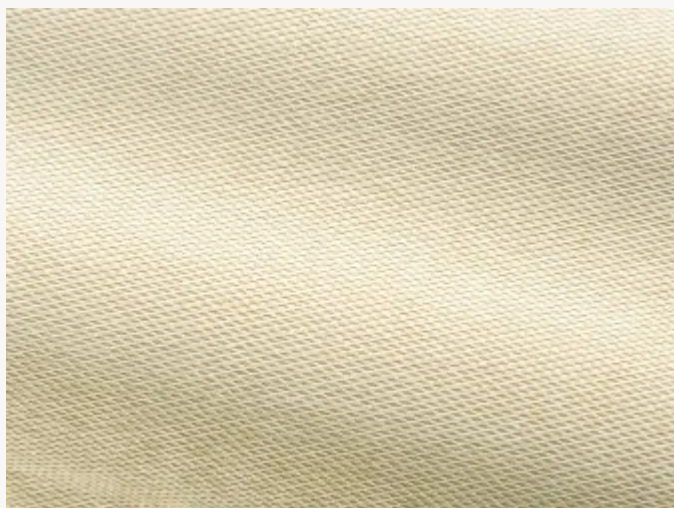


## I6517002 VIRGILE

This luxurious plain-weave with a trellis and lattice pattern in covered yarn makes an excellent upholstery fabric.

### I6517002 - Vaniglia 02



Laize : 146,00 cm / 57,48 inch

### Fadini Borghi

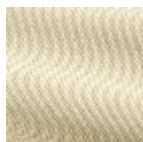
<b>PERFORMANCE</b>	High Rub Test
<b>TYPE</b>	-
<b>USE</b>	Intensive use
<b>MARTINDALE</b>	35.000 T
<b>COMPOSITION</b>	58 % Cotton - 34 % Polyester - 8 % Polyamide
<b>SALES UNIT</b>	Available per meter/yard
<b>WIDTH</b>	146 cm / 57,48 inch
<b>WEIGHT</b>	803 gr / ml
<b>CARE</b>	

**INFORMATION** Reinforced stitching recommended to avoid fraying at seams

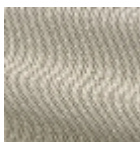
## 5 Colors



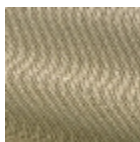
I6517001  
Sabbia 01



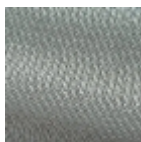
I6517002  
Vaniglia 02



I6517003  
Duna 03



I6517004  
Oro 04



I6517010  
Grigio blu 10